



Co-funded by the  
European Union



THE SUSTAINABLE BUILDINGS E-LEARNING PROGRAM

Module 6

# INNOVATIVE BUILDING TECHNOLOGIES

This module was co-funded by the European Union. Its contents are the sole responsibility of WRI Türkiye and do not necessarily reflect the views of the European Union.





## TÜRKİYE SUSTAINABLE BUILDINGS NETWORK

The Türkiye Sustainable Buildings Network was established as part of the “Türkiye Sustainable Buildings Network Project,” which is co-funded by the European Union under the Civil Society Action towards European Green Deal Grant Scheme. The project is coordinated by WRI Türkiye, in partnership with the Zero Energy and Passive House Association (SEPEV) and with the support of the Danish Green Growth Network (DGGN).

The network operates with the aim of supporting climate action in the building and construction sector, promoting green transformation, enhancing the technical knowledge and skills of sector stakeholders, and mainstreaming the concept of sustainable buildings.



As part of this effort, the Sustainable Buildings E-Learning Program has been developed to serve as a comprehensive knowledge resource for all stakeholders in the building sector. The program consists of 10 training modules designed to contribute to the sector's sustainability, energy efficiency, and low-carbon transition goals.

**Module 1: Overview of Sustainable Buildings**

**Module 2: Decarbonization in the Building Sector and the Whole Life-Cycle Approach**

**Module 3: Sustainable Building Materials**

**Module 4: Sustainable Construction and Demolition Practices**

**Module 5: District Heating and Cooling Systems**

**Module 6: Innovative Building Technologies**

**Module 7: Financing Instruments for Sustainable Buildings**

**Module 8: Emissions Trading Systems and the Building Sector**

**Module 9: Energy-Efficient and Passive Building Design**

**Module 10: The European Green Deal and the Building Sector**

For more information about the Türkiye Sustainable Buildings Network and to access other modules, please visit [the link](#).



# MODULE OBJECTIVES

*This module is designed to address the role of innovative technologies in the construction industry, their contribution to sustainability goals, and strategies for the buildings of the future. The aim is to provide participants with a comprehensive perspective on the advantages offered by modern building technologies and their implementation methods.*

The objectives of this training module are as follows:

- To understand the contribution of technological transformation in the construction industry to sustainability goals and its impact on building performance.
- To grasp the critical role of BIM (Building Information Modeling) and digital twin technologies in reducing error rates, saving costs, and managing projects.
- To understand the potential of applications such as 3D printing, modular/prefabricated structures, robotic applications, and augmented reality (AR) in reshaping construction processes.
- To explain how data analytics and predictive maintenance, energy management optimization, user comfort enhancement, and carbon footprint monitoring applications will shape future building operations.
- To understand the advantages of smart HVAC systems, passive climate solutions, and IoT-based high-efficiency lighting systems.
- To understand the relationship between building electrification, renewable energy integration, energy storage solutions, and environmental sustainability.
- To examine the impact of next-generation materials on the energy efficiency and sustainability of buildings.
- To understand the transition processes from sustainability to resilience and analyze the trends shaping the future of the construction industry.



# TABLE OF CONTENTS

## SECTION 1: What is Innovative Building Technology?

- 1.1. Elements that Make a Technology Innovative
- 1.2. The Transformational Impact of Innovative Technologies in the Construction Sector
- 1.3. Contribution of Innovative Building Technologies to Sustainability Goals

## SECTION 2: Digital Technologies

- 2.1. Building Information Modeling (BIM)
- 2.2. The Role of BIM-Based Project Management in the Construction Process
- 2.3. Impact of BIM-Based Project Processes on Cost and Efficiency
- 2.4. Overview of Typical BIM Applications
- 2.5. Building Energy Modeling with BIM
- 2.6. Digital Twin Technology and Artificial Intelligence Integration

## SECTION 3: New Methods In Construction Processes

- 3.1. 3D Printing Technology
- 3.2. Modular Construction Applications
- 3.3. Augmented Reality (AR) and Virtual Reality (VR)
- 3.4. Robotic Applications and Drones

## SECTION 4: IoT-Based Building Technologies

- 4.1. Internet of Things (IoT) in Buildings
- 4.2. Pillars of Modern Smart Building Technologies
- 4.3. Energy Management, Comfort, Predictive Maintenance, and Reporting
- 4.4. Smart Readiness Indicator (SRI)
- 4.5. The World's Smartest and Greenest Building: The Edge

## SECTION 5: Innovative HVAC And Lighting Technologies

- 5.1. AI-Powered HVAC Systems
- 5.2. High-Efficiency Sustainable HVAC Solutions
- 5.3. Passive Climate Control Solutions
- 5.4. Air Quality and Comfort
- 5.5. Innovative Lighting Solutions

## SECTION 6: Electrification of Buildings

- 6.1. Key Elements of Electrification
- 6.2. Building-Scale Strategies
- 6.3. Renewable Energy Technologies
- 6.4. Energy Storage Technologies – Electricity
- 6.5. Energy Storage Technologies – Thermal

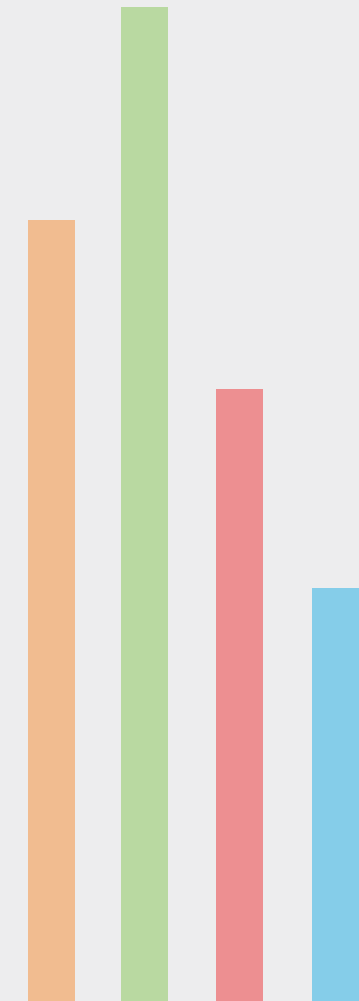
## SECTION 7: Innovative Materials

- 7.1. Types of Innovative Materials

## SECTION 8: The Buildings of the Future

- 8.1. Transition from Sustainability to Resilience in the Buildings of the Future
- 8.2. Floating Houses: A Resilience-Focused Vision for the Future

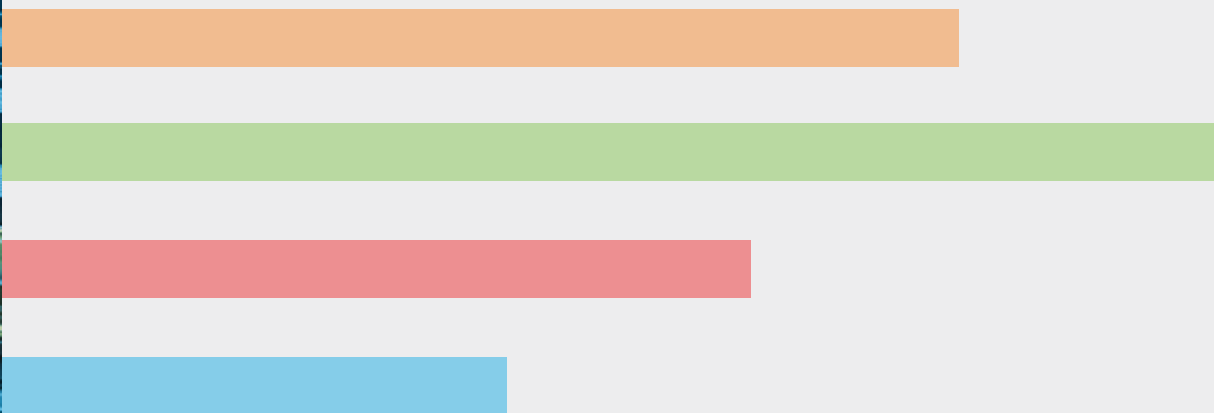
## References





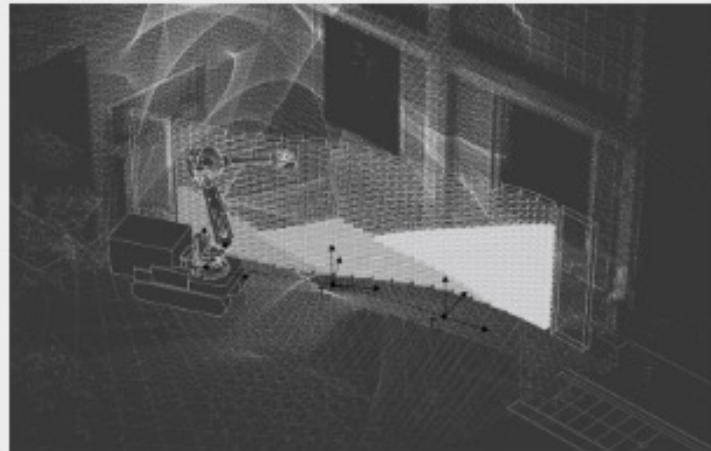
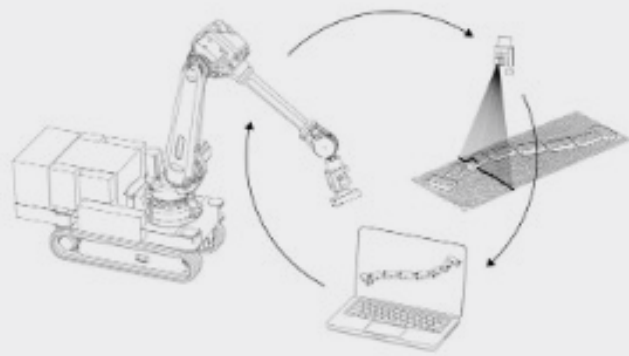
Section 1

# WHAT IS INNOVATIVE BUILDING TECHNOLOGY?



# 1.1. Elements that Make a Technology Innovative

*Innovative building technologies are defined as technologies that offer advanced solutions beyond current methods and techniques, aimed at improving the performance, energy efficiency, sustainability, and user experience of buildings throughout their design, construction, operation, maintenance, and life cycle processes. These technologies typically benefit from advancements in fields such as materials science, energy systems, digitalization, automation, and artificial intelligence.*



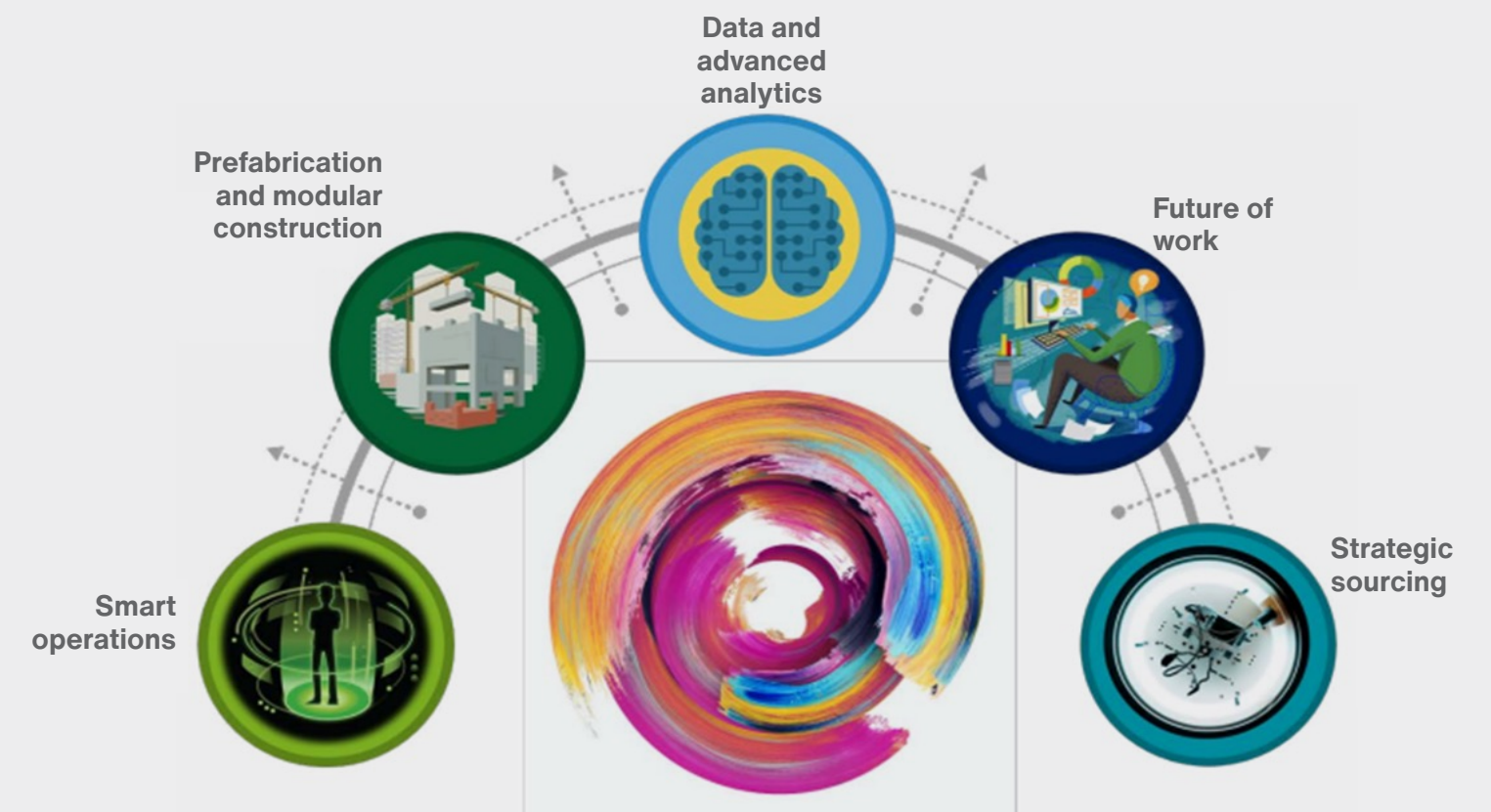
- **Energy Efficiency and Sustainability:** The technology reduces energy consumption, lowers the carbon footprint, supports renewable energy sources, or adopts a circular economy approach.
- **User-Centricity:** It provides solutions that ensure people live in healthier, more comfortable, and safer environments. For example, systems that improve air quality through smart sensors.
- **Integration Capability:** The new technology can easily integrate with building automation systems, IoT devices, or existing infrastructures.
- **Resource and Cost Efficiency:** It offers economic sustainability by providing more benefits with less resource usage or lower costs.
- **High Performance and Longevity:** It optimizes the lifespan of devices by increasing durability, reducing maintenance requirements, and ensuring system continuity.
- **Adaptation and Flexibility:** It can adapt to various building types and geographical conditions and can be personalized to meet user needs.
- **Digitalization and Data Utilization:** It uses technologies like data analytics, machine learning, and digital twins to optimize building performance. For example, smart systems that predict energy consumption and determine maintenance requirements.

*Robotic Applications for Construction NCCR Digital Fabrication Research Project  
© Gramazio Kohler Research, ETH Zurich [1]*

## 1.2. The Transformational Impact of Innovative Technologies in the Construction Sector

*Innovative technologies radically transform conventional business processes, enabling the emergence of faster, more efficient, sustainable, and user-oriented solutions in the construction sector. This transformation impacts traditional workflows, from on-site applications to design and material selection, influencing all stakeholders in the construction industry.*

- **Sustainability and Environmental Impact:** Innovative technologies contribute to sustainability goals by reducing the environmental footprint of the construction sector. While conventional construction techniques are associated with high energy consumption, excessive waste production, and environmental degradation, innovative technologies address these issues by offering effective solutions.
- **Economic Efficiency and Competitive Advantage:** Innovative technologies enhance efficiency while lowering costs, providing a global competitive edge. Through modular construction and digitalization, projects are completed faster and at a lower cost. Additionally, they support local production and supply chains, contributing to regional economies.
- **Urbanization and Infrastructure Transformation:** Innovative building technologies form the foundation of smart city infrastructures. IoT-based systems enable more efficient management of energy and water resources, while flexible and resilient structures enhance urban safety against natural disasters. The renovation of aging buildings accelerates urban transformation processes.
- **Impact on Individuals and Society:** By providing comfortable, healthy, and user-friendly living spaces, innovative technologies improve the quality of life. Accessible designs for individuals with disabilities and customizable systems enhance the inclusivity of buildings. Furthermore, they promote community engagement and strengthen social cohesion.
- **Workforce and Education:** Technological transformation reshapes the workforce in the construction sector, increasing demand for advanced skills. It encourages specialization in robotics and artificial intelligence while automating repetitive tasks, allowing workers to focus on creative and strategic processes.
- **Long-Term Effects:** Innovative technologies play a crucial role in combating climate change by reducing carbon emissions through energy-efficient buildings. More resilient and sustainable structures help shape the cities of the future while ensuring a more livable environment for future generations.



*Trends shaping the future of construction* © Deloitte [2]

## 1.3. Contribution of Innovative Building Technologies to Sustainability Goals

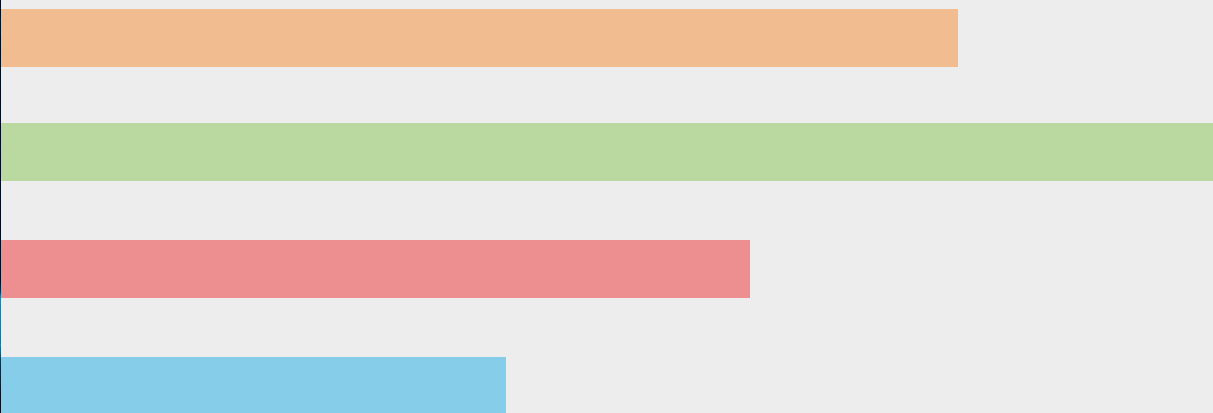
*While innovative building technologies contribute to sustainability goals by reducing environmental impact, they also generate economic and social benefits. However, widespread adoption depends on overcoming challenges such as high initial investment costs, regulatory barriers, and lack of public awareness. Policies and incentive mechanisms can accelerate this process, making buildings more effective contributors to sustainability.*

- **Energy Efficiency and Renewable Energy Use:** High-efficiency, next-generation technological heating, ventilation, and air conditioning (HVAC) systems can significantly reduce buildings' energy consumption. Low-carbon technologies such as heat pumps decrease reliance on fossil fuels in building energy use, while integrated renewable energy systems lower the carbon footprint.
- **Smart Systems and Digitalization:** AI-powered building automation systems optimize energy and water consumption. IoT sensors analyze user habits to ensure efficient operation of lighting and climate control systems, preventing unnecessary energy use. Energy management systems monitor and analyze energy consumption, helping users make more informed decisions in line with sustainability goals.
- **Material Efficiency and Circular Economy:** Construction elements made from recyclable or biodegradable materials reduce waste at the end of a building's lifecycle. Additionally, modular and prefabricated structures minimize material waste and environmental impacts during construction.
- **Decarbonization and Net-Zero Energy Buildings:** Building designs based on net-zero energy and net-zero carbon principles play a key role in achieving sustainability targets. For example, low-temperature heating systems facilitate the integration of renewable energy sources, reducing dependence on fossil fuels.
- **Climate Resilience:** Innovative building technologies have the capacity to adapt to changing climate conditions. Sustainable design elements, such as green roofs that mitigate the urban heat island effect, enhance resilience against extreme weather events. Additionally, sensor-equipped buildings continuously monitor energy consumption profiles, optimizing them in response to changing conditions.
- **User Experience and Awareness:** The interaction of smart systems with users enables individuals to make more conscious decisions about their energy and resource consumption. Moreover, energy-efficient building solutions provide a comfortable and healthy environment, increasing user satisfaction.



Section 2

# DIGITAL TECHNOLOGIES



# 2.1. Building Information Modeling (BIM)

*Building Information Modeling (BIM) is the process of creating a digital representation of a building or infrastructure project. It can also be defined as an information management process that encompasses the physical and functional characteristics of a building or facility. This approach ensures effective communication and collaboration among project stakeholders throughout the entire project life-cycle, including design, construction, operation, and maintenance phases.*

## DIMENSIONS OF BIM

**2D CAD:** The stage where traditional two-dimensional drawings are created.

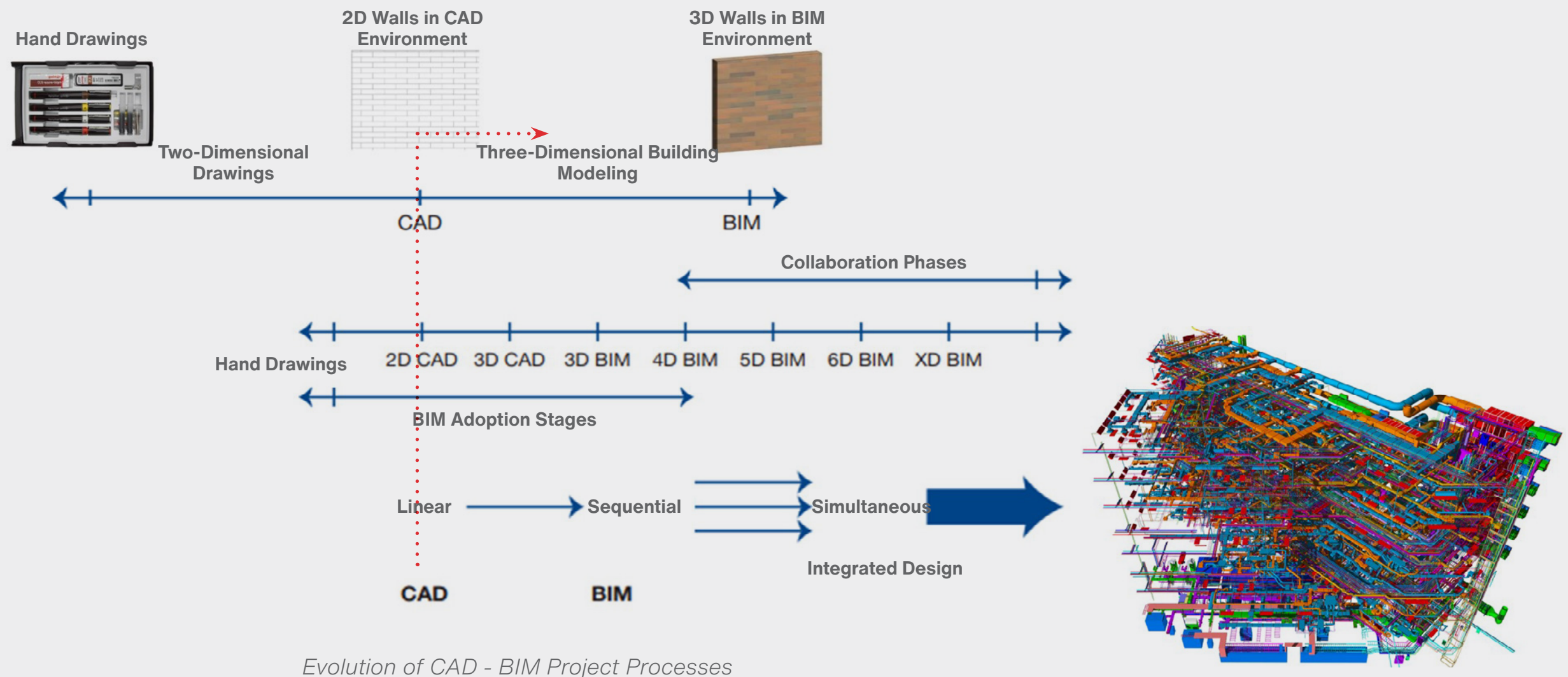
**3D BIM:** Development of three-dimensional digital models, incorporating geometric information.

**4D BIM:** Addition of the time dimension, covering project schedules and the construction process.

**5D BIM:** Inclusion of the cost dimension, relating to project budgeting.

**6D BIM:** Sustainability dimension, incorporating energy analysis and life-cycle costs.

**XD BIM:** Advanced dimensions, typically customized and added based on project requirements, such as the operational phase.



## 2.1. Building Information Modeling (BIM)



*Design before CAD technology*

### Key Features of the BIM-Based Project Process

**Digital Modeling:** The process of creating a three-dimensional (3D) digital model of a structure. This model includes not only geometric information but also material properties, cost estimates, construction schedules, and other technical data.

**Data-Driven Approach:** 3D modeling is more than just visualization; the model serves as a comprehensive information repository. The digital representation of the building contains detailed data on each component, such as wall materials, insulation properties, and maintenance requirements.

**Collaboration and Integration (Integrated Design):** All project stakeholders—including architects, engineers, contractors, and facility managers—can work on the same BIM model. This reduces communication errors and enhances efficiency.

**Life-Cycle Management:** BIM supports not only design and construction processes but also maintenance and operation throughout the building's life-cycle.

## 2.2. The Role of BIM-Based Project Management in the Construction Process

### Integrated Information Flow:

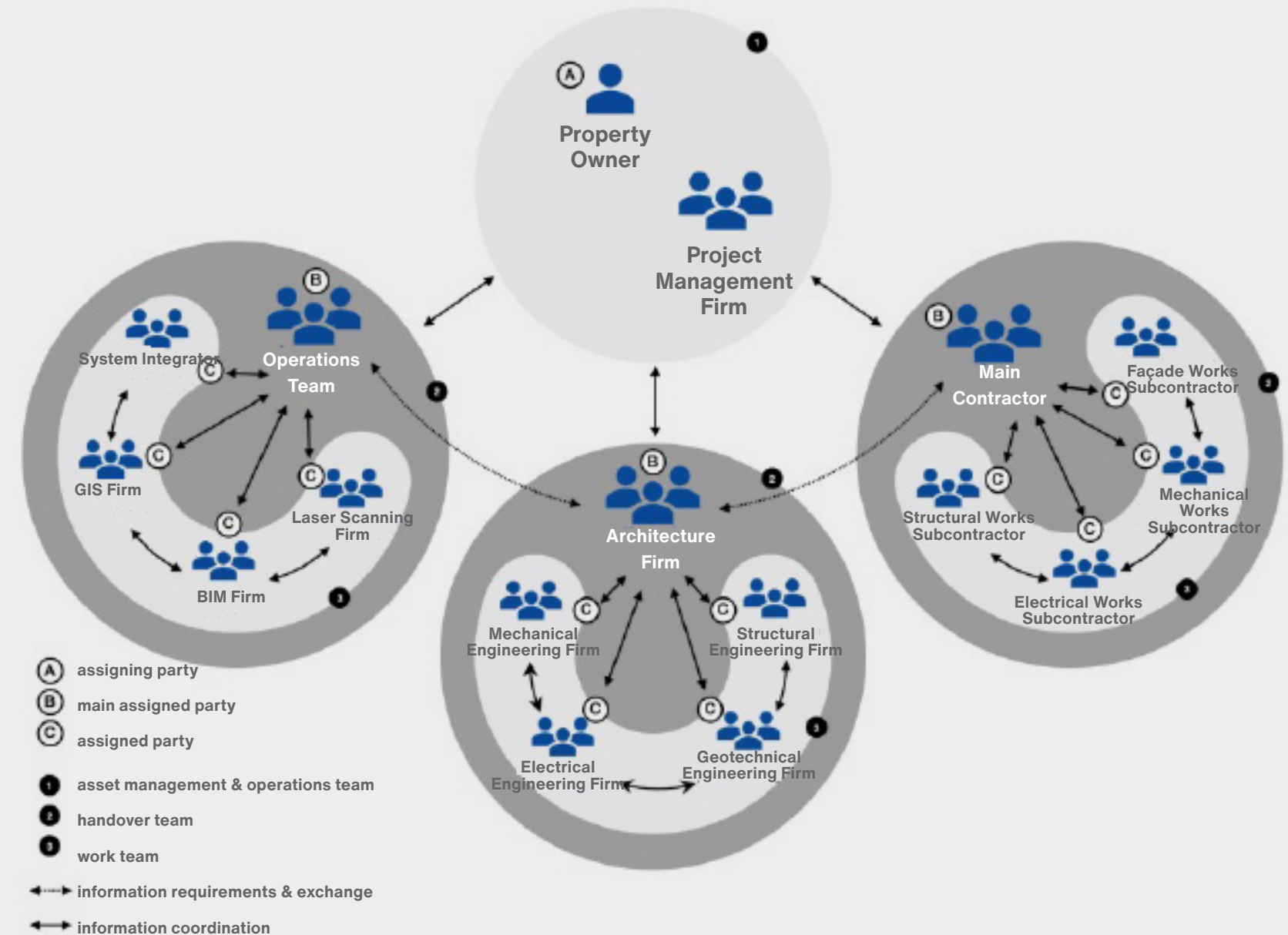
- BIM facilitates seamless information flow by enabling all project stakeholders to work on the same platform.
- Data from different disciplines, including designers, engineers, contractors, and facility managers, are consolidated into a single digital model, ensuring efficient information exchange and streamlined design management.

### Project Planning and Simulation:

- By integrating time (4D BIM) and cost (5D BIM) elements into the digital model, project planning and cost analysis can be conducted effectively.
- Digital simulations of construction processes, schedules, and project cash flow can be generated. Construction site activities and project progress stages can be visualized in real time.

### Supporting Decision-Making Processes:

- The impact of design changes on the project can be assessed instantly.
- Potential issues that could affect the project can be identified early, allowing for proactive measures to be taken.



*Information Flow Among Project Stakeholders in the BIM Process [3]*

## 2.3. Impact of BIM-Based Project Processes on Cost and Efficiency

### Reducing Errors in Design and Planning:

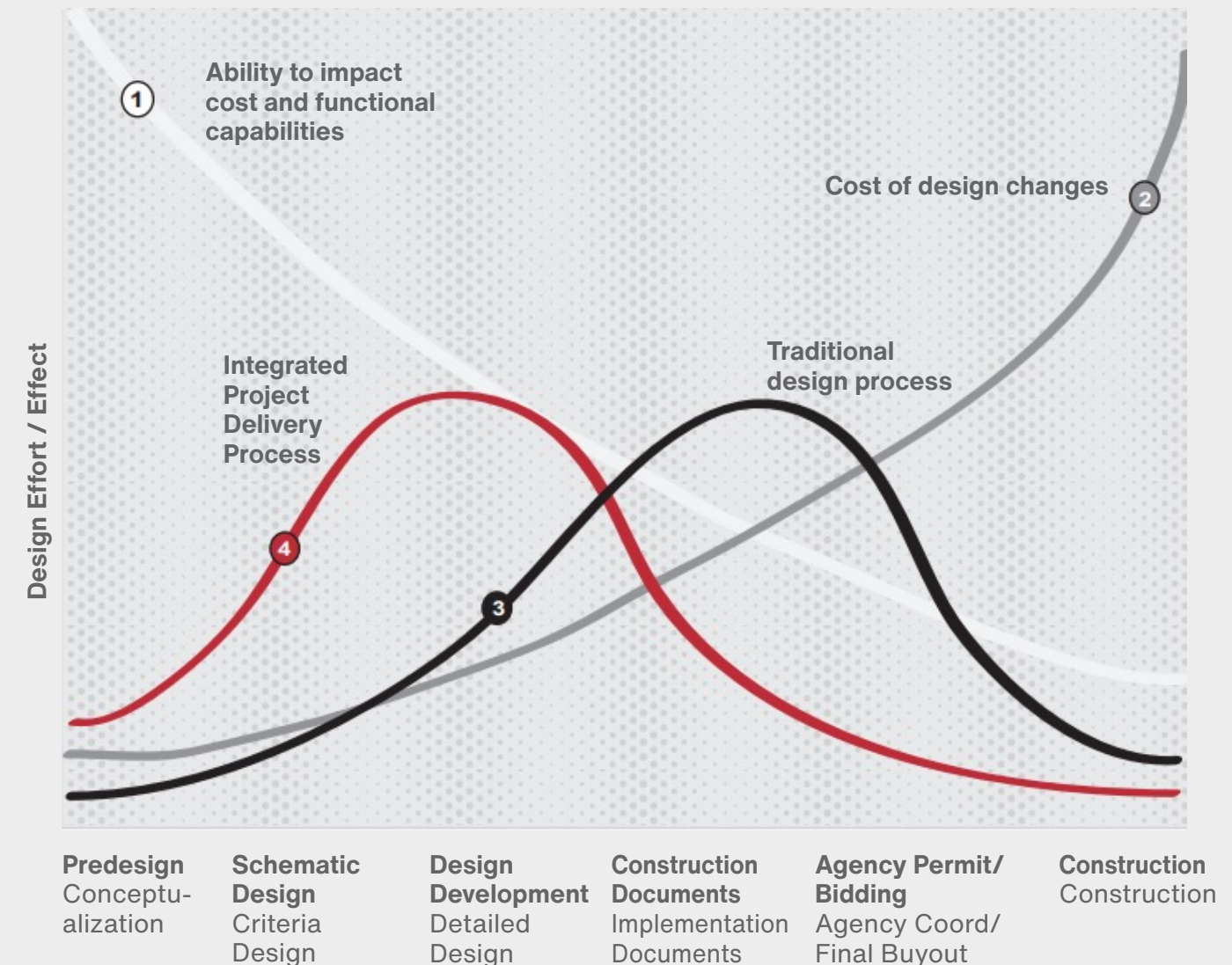
- **Coordination and Clash Detection:** BIM enables seamless collaboration among all disciplines (architectural, mechanical, electrical, and structural). Clash detection tools identify potential conflicts before construction begins, minimizing on-site issues and associated costs.
- **Accurate and Detailed Visualization:** 3D models allow project stakeholders to visualize the entire structure virtually, reducing design errors and misinterpretations.
- **Energy Efficiency and Sustainability:** Integrated energy simulations provide insight into the future performance of the building, facilitating energy-focused optimization during the design phase.

### Cost Control and Material Optimization:

- **Accurate Quantity Take-Offs:** BIM ensures precise material calculations, preventing over-ordering or shortages that may disrupt workflow.
- **Managing Design Changes:** BIM models visualize the impact of design modifications instantly, helping to avoid unnecessary cost escalations.

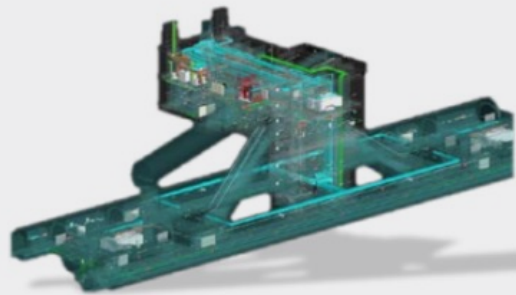
### Enhancing Efficiency During the Construction Process::

- **Optimization of Time and Work Scheduling:** BIM enables integration with time planning, allowing for better coordination of workflows. This shortens construction duration and reduces indirect costs.
- **Minimizing the Need for On-Site Error Corrections:** Errors detected during the design and planning phases help prevent construction delays and rework.
- **Cloud-Based Collaboration:** BIM platforms provide cloud-based solutions, enabling real-time collaboration among project stakeholders. This reduces communication-related errors and accelerates work processes.

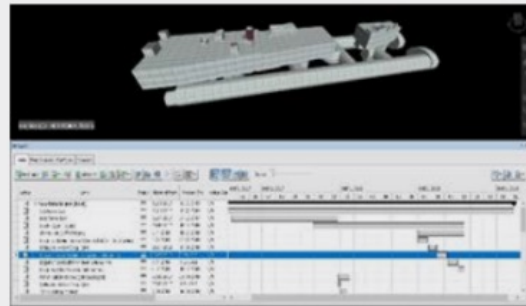


© Adapted from the © McLeamy Curve.

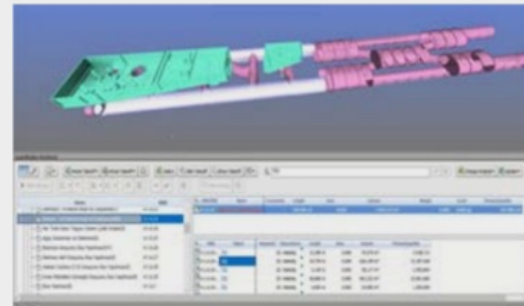
## 2.4. Overview of Typical BIM Applications



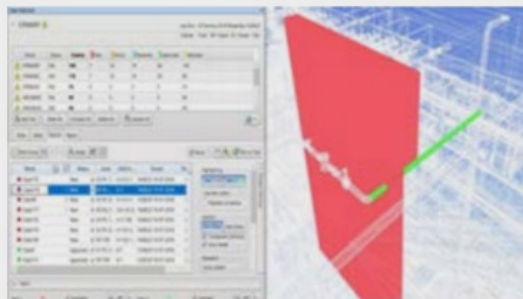
3D Modeling



4D Planning



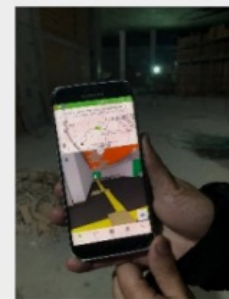
5D Cost



Clash Detection



Coordination Meetings



Site Inspection

BIM Process in Metro Projects © Emay Engineering

- **3D Modeling:** The process of creating a geometric and visual three-dimensional digital model that integrates architectural, mechanical, electrical, and other disciplines during the design phase. This enables stakeholders to visualize all project details in a virtual environment.
- **4D Planning:** Incorporates the time dimension into the project, modeling the step-by-step progression of the construction process. By integrating the schedule with the model, more effective planning is achieved.
- **5D Cost:** Adds cost data to the BIM model, allowing for the dynamic calculation of the project budget. Material quantities and cost analyses can be performed directly through the model.
- **Clash Detection:** Identifies and resolves conflicts and inconsistencies that may arise when coordinating models from different disciplines (e.g., detecting pipes intersecting with beams).
- **Coordination Meetings:** Regular meetings where representatives from various disciplines review BIM models to assess project compatibility and progress. These meetings promote solution-oriented collaboration.
- **Site Inspection:** The use of BIM models on construction sites to ensure compliance with project specifications, conduct quality control, and monitor progress. Mobile devices enable real-time access to the model, allowing on-site verification.

## 2.4. Overview of Typical BIM Applications



### BIM IMPLEMENTATION IN TÜRKIYE

In Türkiye, the adoption of BIM has gained traction in recent years, particularly in large-scale and complex projects. The use of BIM technologies has become increasingly common in projects such as city hospitals, airports, metro systems, and high-rise office buildings, especially those implemented through public-private partnerships. For instance, extensive transportation and infrastructure projects like Istanbul Airport and the Üsküdar-Çekmeköy Metro Line, managed by Istanbul Metropolitan Municipality, have leveraged BIM methods to enhance the efficiency of design and construction processes. Similarly, BIM has played a crucial role in urban regeneration projects by facilitating the modeling of old structures and the planning of renovation processes. Large-scale construction firms aiming to comply with international standards use BIM to optimize their projects, particularly in areas requiring high precision, such as energy-efficient building design and data centers. Likewise, public infrastructure projects benefit from BIM technology for accurate workforce and cost planning. However, it is important to note that BIM adoption remains limited in smaller-scale projects, as it is still primarily associated with projects requiring significant capital investment and technical expertise.

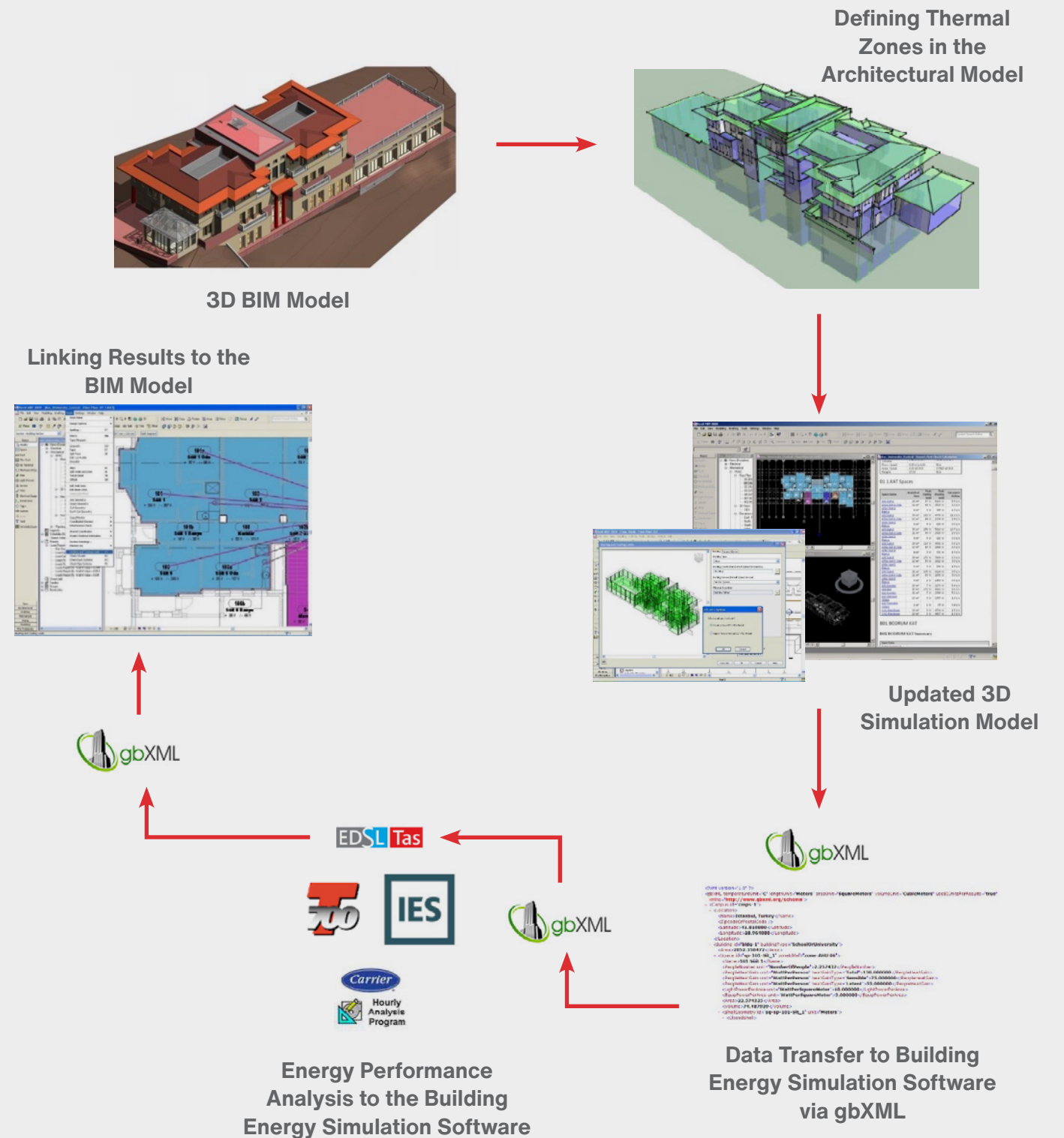
## 2.5. Building Energy Modeling with BIM

In traditional energy modeling processes, an architectural model is first created, and then the geometric data and simulation inputs necessary for building energy modeling are manually reproduced using different software tools. This process can lead to errors in data transfer, time loss, and inconsistencies due to manual data entry. In contrast, BIM-based energy modeling allows energy simulations to be conducted directly and integrally with the BIM model, eliminating the need for redundant data reproduction. As a result, the process becomes more efficient and consistent while also enhancing collaboration among project teams.

- **Simulation Model Creation and Data Processing:** The simulation model incorporates the building's geometric features (walls, windows, roofs, etc.), material properties, and architectural data. These elements serve as fundamental inputs for energy modeling.
- **Energy Simulation:** Simulation data from the BIM model is transferred to energy analysis software (such as IES, EnergyPlus) using data exchange formats like gbXML or IFC, or it can be performed directly within the BIM platform. These software tools calculate energy consumption related to heating, cooling, and lighting, as well as heating and cooling loads.
- **Performance Analysis:** Using data extracted from the BIM model, key performance metrics such as building energy consumption, carbon emissions, and daylight utilization are assessed. This process helps optimize energy efficiency and sustainability targets.

### WHAT IS gbxml?

gbXML (Green Building XML), is a data format used in building energy modeling processes. Its primary purpose is to facilitate data exchange between BIM (Building Information Modeling) tools and energy analysis software.



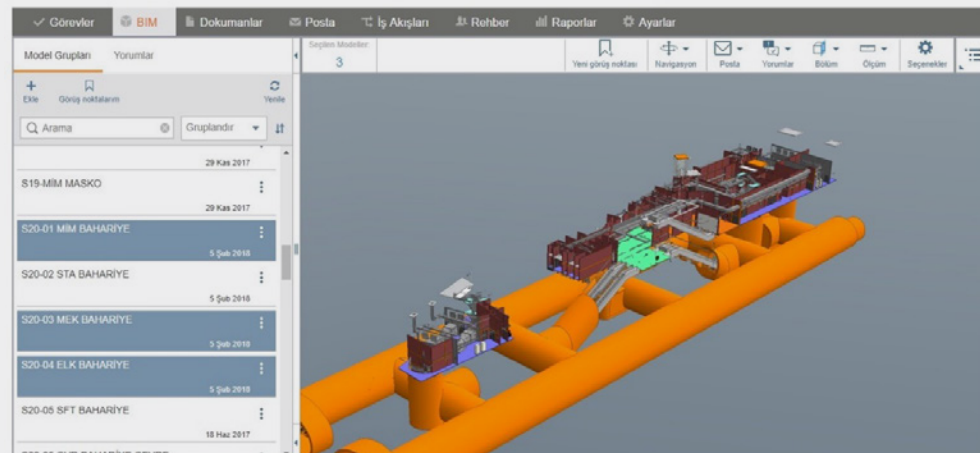
*Building Energy Modeling Process with BIM*

## 2.5. Building Energy Modeling with BIM

### ATAKÖY-İKİTELLİ METRO LINE, İSTANBUL

The Ataköy-İkitelli Metro Line is a project designed to strengthen Istanbul's transportation infrastructure, connecting the districts of Bakırköy, Bahçelievler, Bağcılar, Küçükçekmece, and Başakşehir. The project is 13.4 kilometers long and has 12 underground stations. The effective use of BIM (Building Information Modeling) technology during the planning and construction phases led the project to be a finalist in the 2018 Autodesk AEC Excellence Awards. BIM technology has provided several advantages during the design and construction stages of the project:

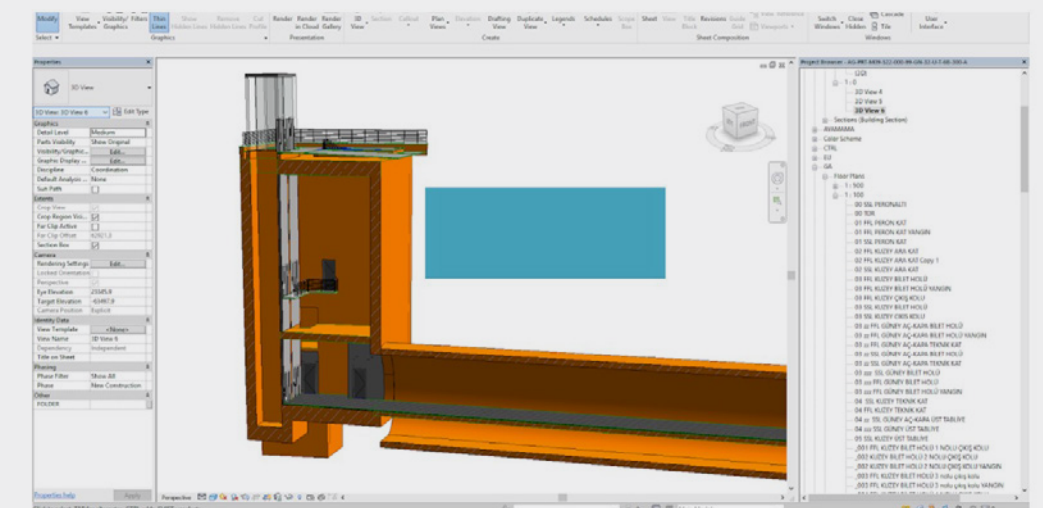
- **Interdisciplinary Coordination:** Effective collaboration between different disciplines minimized potential conflicts in the design and construction processes.
- **Efficiency and Time Management:** Simulations carried out through digital models allowed the construction processes to progress more quickly and smoothly.
- **Cost Control:** Identifying and correcting potential errors in advance helped avoid additional costs



Architectural Model of the Metro Station @Emay Engineering.



Design Coordination on the Cloud Platform @Emay Engineering.



Monitoring of Design Changes @Emay Engineering.

## 2.5. Building Energy Modeling with BIM

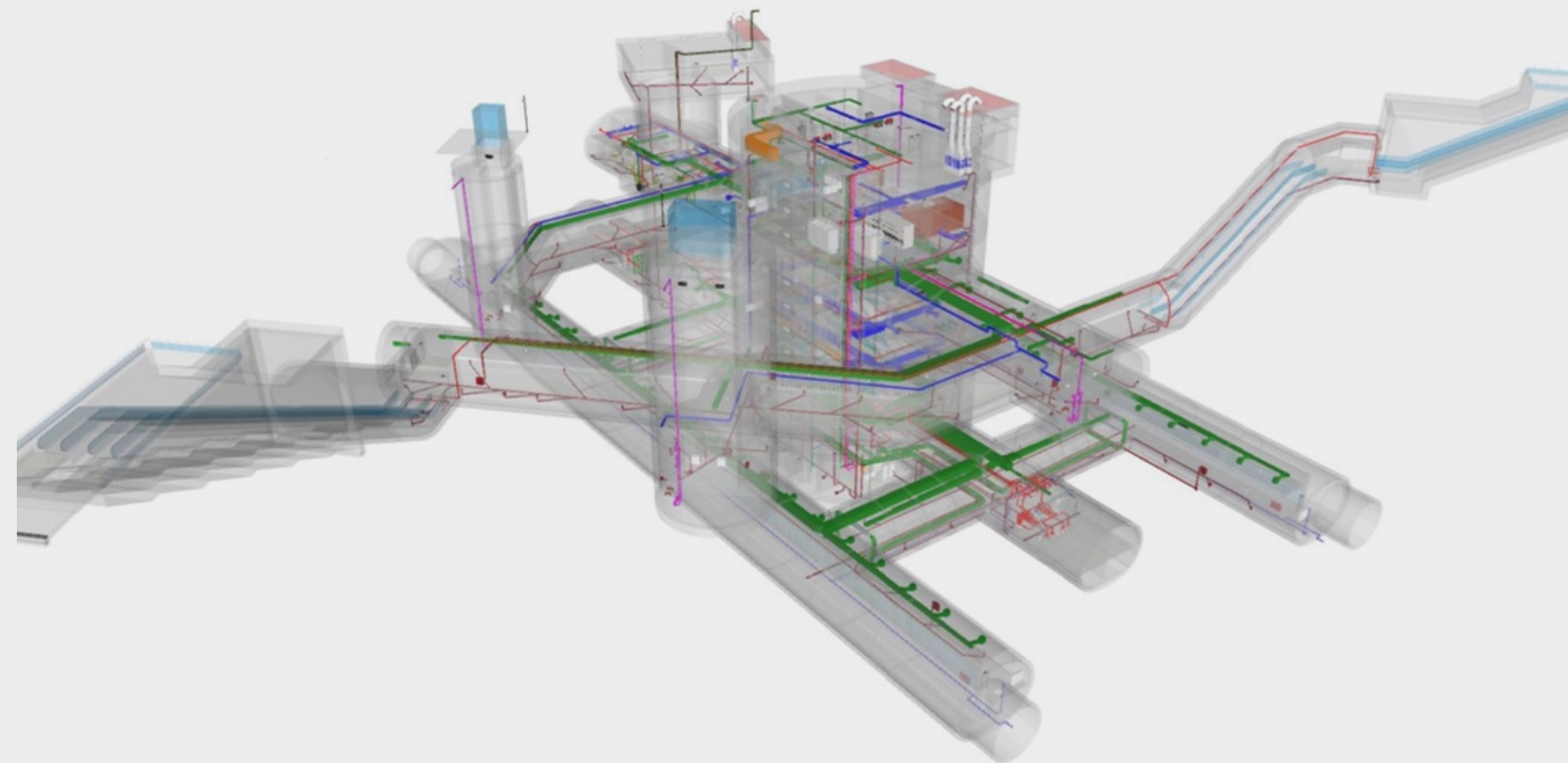
### CONTRIBUTIONS OF BIM USE TO THE PROJECT

The project utilized Building Information Modeling (BIM) technology extensively throughout the construction and design processes. The key contributions of BIM to the project include:

- **Interdisciplinary Coordination:** BIM technology facilitated integrated work between different disciplines such as architecture, electrical, and mechanical, allowing for the detection of potential errors before field applications.
- **Efficiency and Cost Control:** BIM increased efficiency during the design, planning, and construction phases, contributing to the faster and error-free progress of the processes.
- **Environmental Interaction and Analysis:** Existing condition models were used to analyze the interaction between the metro line and its environment (station structures, infrastructure intersections, roads, etc.), and a design that was compatible with surrounding elements was developed

### ÜMRANIYE-ATAŞEHİR-GÖZTEPE METRO LINE, İSTANBUL

The Ümraniye-Ataşehir-Göztepe Metro Line is a 13-kilometer-long project consisting of 11 stations that will connect the districts of Kadıköy, Ataşehir, and Ümraniye on the Asian side of Istanbul. When completed, the metro line will have a capacity to carry 44,000 passengers per hour in one direction and will operate with a fully automated, driverless (ATO) system. The Ümraniye-Ataşehir-Göztepe Metro Line Project won the Infrastructure Design – Large Scale Projects category award at the 2019 Autodesk AEC Excellence Awards. BIM technology was used in this metro line project, which spans 13 kilometers and consists of 11 stations, resulting in a 16% cost saving across the entire project.

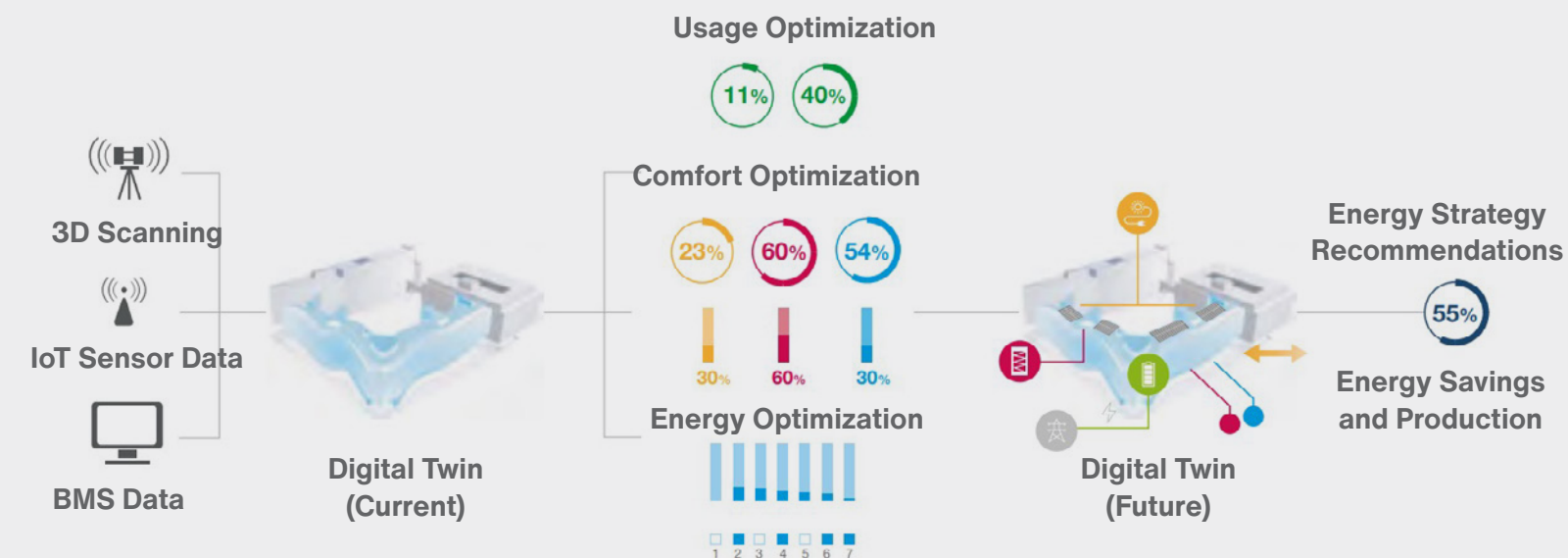


*Metro Station Model @Yüksel Proje*

## 2.6. Digital Twin Technology and Artificial Intelligence Integration

Digital Twin, BIM, and Artificial Intelligence technologies present a powerful approach that combines modern building management with sustainability goals. County Hall building in The Hague serves as a meaningful example with its forward-looking perspective.

- **Real-Time Management and Efficiency:** A digital twin functions as a real-time digital replica of the building. It is continuously updated with data from the building's internal and external sensors. The likelihood of failures in critical building components such as elevators and HVAC systems is detected in advance. This allows for timely maintenance and prevents operational disruptions. Integrated with the BIM model, the digital twin analyzes energy consumption and offers sustainable solutions. For example, heating and cooling systems are optimized based on weather conditions and usage intensity.
- **Smart Data Management with BIM:** BIM forms the foundation for the building's digital twin. It simplifies data management throughout the design and construction stages, as well as during the operation and maintenance phases. The BIM model can be used throughout the building's entire lifecycle, merging with the digital twin to enable real-time, data-driven decision-making.



### Digital Twin



A digital twin is the creation of a virtual representation of a physical entity, process, or system using real-time data and simulations. This representation enables continuous information exchange between the physical and digital worlds.

- **Smart Optimization with Artificial Intelligence:** AI applications based on machine learning enhance the integration of the digital twin and BIM, increasing both operational and energy efficiency. AI-based Building Management Systems (BMS) continuously analyze energy consumption data, optimize operations, and reduce carbon footprints. Based on user density data, elements like indoor temperature and lighting can be dynamically adjusted. AI-supported BMS automatically generates building performance reports to raise user awareness, predict future needs, and support long-term planning.

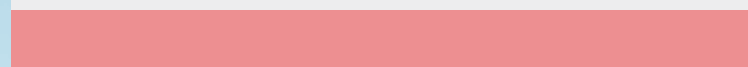
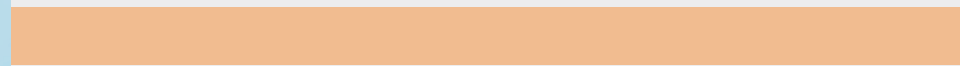


*The Hague's Country Hall Digital Twin Solution ©Arup*



Section 3

# NEW METHODS IN CONSTRUCTION PROCESSES

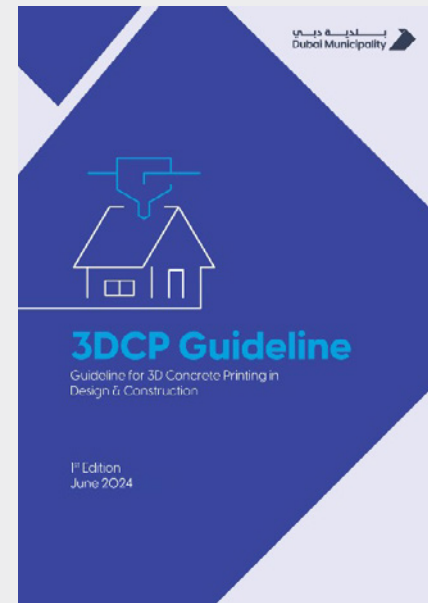


## 3.1. 3D Printing Technology

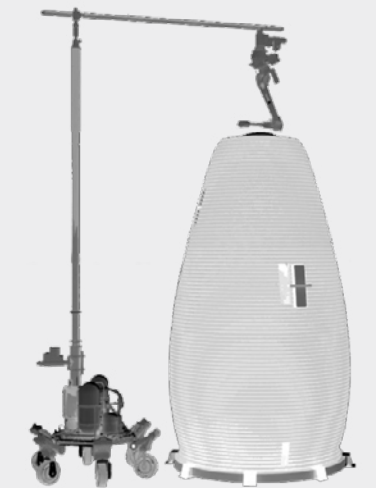
3D printing is an innovative manufacturing method that enables the transformation of a digital model into a physical object. This technology operates by adding materials layer by layer, which is why it is also referred to as additive manufacturing.

- **Speed and Efficiency:** 3D printing allows for the rapid production of structural components compared to traditional construction methods.
- **Cost Savings:** Compared to conventional methods, 3D printing requires less material usage. Additionally, it reduces labor demand, thereby lowering overall construction costs.

- **Design Flexibility:** Complex and unique designs that are difficult to produce using traditional methods can be easily realized with 3D printing.
- **Accessibility and Humanitarian Aid:** 3D printing plays a crucial role in various applications, such as the rapid production of temporary shelters in disaster areas and providing cost-effective housing solutions in developing regions.
- **Material and Technology Advancements:** The integration of various materials—such as concrete, polymers, and metals—into printing technology offers a wide range of applications in the construction industry. Additionally, when combined with robotics and automation systems, it enhances the safety and efficiency of construction processes.



*Dubai's Office of the Future Project, built with 3D printing technology. Dubai's Dubai 3D Printing Strategy aims to construct 25% of buildings using 3D printing by 2030.*

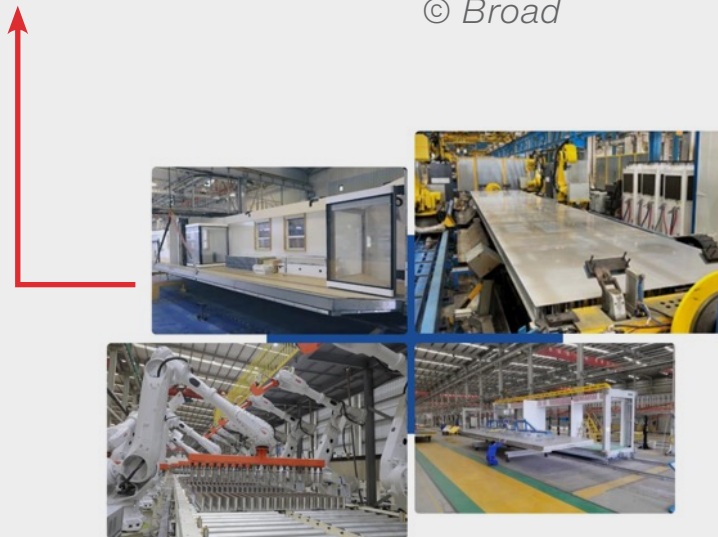


*AI SpaceFactory robotic 3D printing technology for a Mars mission habitat project.*

## 3.2. Modular Construction Applications



© Broad



### Modular Housing Project

The modular housing project developed by Broad consists of 56 modules, forming an 11-story structure with a total area of 2,973 m<sup>2</sup>. All modules were manufactured in the factory within 15 days and assembled on-site in less than 29 hours, including all mechanical, electrical, and interior installations, making the building move-in ready.

Modular construction applications are based on the principle of manufacturing building components in a factory environment and assembling them on-site. This method has emerged as an innovative approach that has gained popularity in the construction industry in recent years.

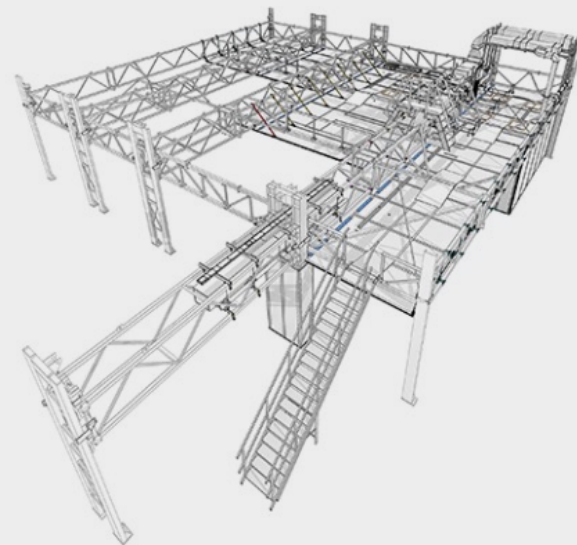
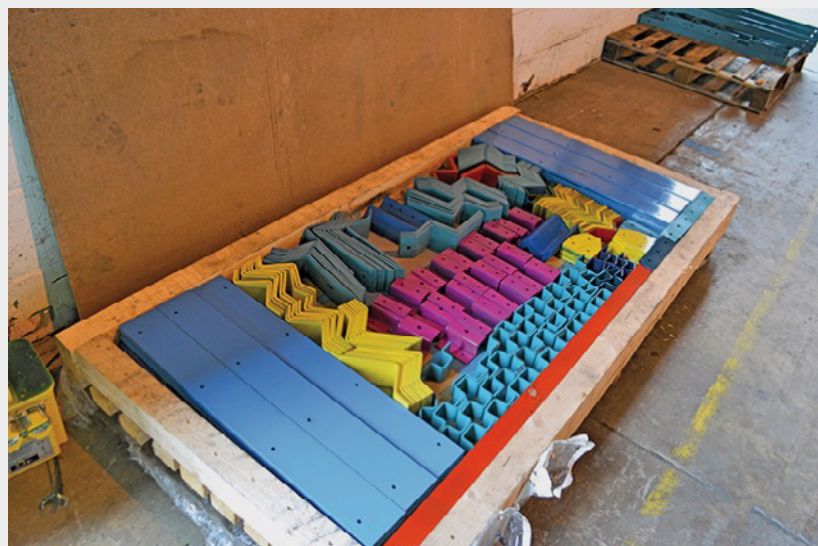
- **Speed and Efficiency:** Modular buildings allow for simultaneous factory production and on-site infrastructure work, significantly reducing the overall construction timeline compared to traditional methods. For instance, in a residential project, modular construction can shorten the building process from months to weeks.
- **Quality Control:** Factory production ensures that building components are manufactured with high precision and in compliance with standards.
- **Cost Advantage:** A shorter construction period and reduced labor requirements result in significant cost savings.
- **Sustainability:** Factory-based modular construction minimizes material waste and reduces environmental impact. Additionally, modular structures can be dismantled and reassembled elsewhere when needed, contributing to the circular economy.
- **Flexibility and Scalability:** Modular buildings can be easily expanded and reconfigured to meet different needs. For example, a healthcare facility can be expanded by adding new modules as patient demand increases.
- **Use in Disaster Zones:** In the event of earthquakes, floods, or other disasters, modular structures can be quickly deployed, providing rapid solutions for temporary or permanent housing needs.
- **Role in Urban Transformation:** In earthquake-prone countries like Türkiye, modular construction offers a crucial solution for urban renewal projects. The ability to construct fast and durable buildings makes modular structures an essential tool for replacing outdated building stock.

## 3.2. Modular Construction Applications

### FACTORY-IN-A-BOX

The Beta Building Prototype, developed by Bryden Wood for GlaxoSmithKline (GSK), was constructed using the Factory-in-a-Box concept. The design is based on the principles of **Design for Manufacturing and Assembly (DfMA)**, which focuses on the prefabrication of building components in a factory environment for rapid on-site assembly. The DfMA approach was chosen to **simplify and accelerate the construction process while reducing costs**. This design strategy enables:

- Standardized components can be sourced from local or international suppliers.
- On-site assembly times are reduced, minimizing errors and labor requirements.
- Locally adaptable solutions contribute to workforce integration and economic benefits.
- Quality control is enhanced through factory-based production processes.



The prototype building has validated the **modularity, flexibility, and efficiency** offered by DfMA, enabling cost-effective and sustainable facility construction in different locations. This approach contributes to GSK's sustainability vision by optimizing not only the construction process but also the operational costs and environmental impact of the facilities.

#### What is DfMA (Design for Manufacturing and Assembly)?

DfMA is an engineering approach that aims to simplify production and assembly processes, reduce costs, and increase efficiency. Design for Manufacturing (DFM) optimizes the manufacturing processes of components, while Design for Assembly (DFA) accelerates and simplifies the assembly of parts. This method offers advantages such as cost savings, reduced error risk, faster processes, and minimized environmental impact.



*Assembly of the "Factory in a Box" prototype.*

## 3.3. Augmented Reality (AR) and Virtual Reality (VR)

Augmented Reality (AR) and Virtual Reality (VR) have gained significant importance as innovative approaches in the construction sector in recent years. These technologies enhance efficiency and reduce costs throughout project planning, design, construction, and management processes. The key applications of these technologies in the construction sector include:

- **Facilitating Design and Planning Processes:** AR integrates digital components into the real project site, while VR creates a fully virtual environment, offering a detailed preview of the completed structure. This enables early detection of design errors and deficiencies.
- **Enhancing Communication and Collaboration:** AR and VR facilitate more effective communication among team members. By allowing professionals from different disciplines to examine the project in a three-dimensional environment, these technologies help prevent potential misunderstandings.
- **Training and Workforce Development:** VR simulations provide construction workers with the opportunity to train in hazardous environments without safety risks, playing a crucial role in reducing workplace accidents. AR, on the other hand, offers real-time guidance in the field, improving work efficiency.
- **Project Management and Monitoring:** AR enables real-time comparison between the current state of the construction site and digital plans, allowing for instant tracking of progress. VR helps project managers visualize timelines and resource allocation, supporting more informed decision-making.
- **Customer Experience and Approval Processes:** VR allows clients to “walk through” the completed project before construction is finished, accelerating approval processes and ensuring projects align with expectations. AR helps potential buyers visualize projects under construction, boosting sales and minimizing construction-related issues.

**Augmented Reality (AR):** This technology integrates digital objects, information, or graphics into the real-world environment. Users can experience these digital contents while seeing the real world through smartphones, tablets, or special AR glasses. For example, placing virtual furniture in a room.

**Virtual Reality (VR):** This technology transports users into a completely digital world. Using VR glasses or headsets, users become fully isolated from the real world and can interact with the virtual environment. For instance, being inside a video game or touring a virtual construction site.



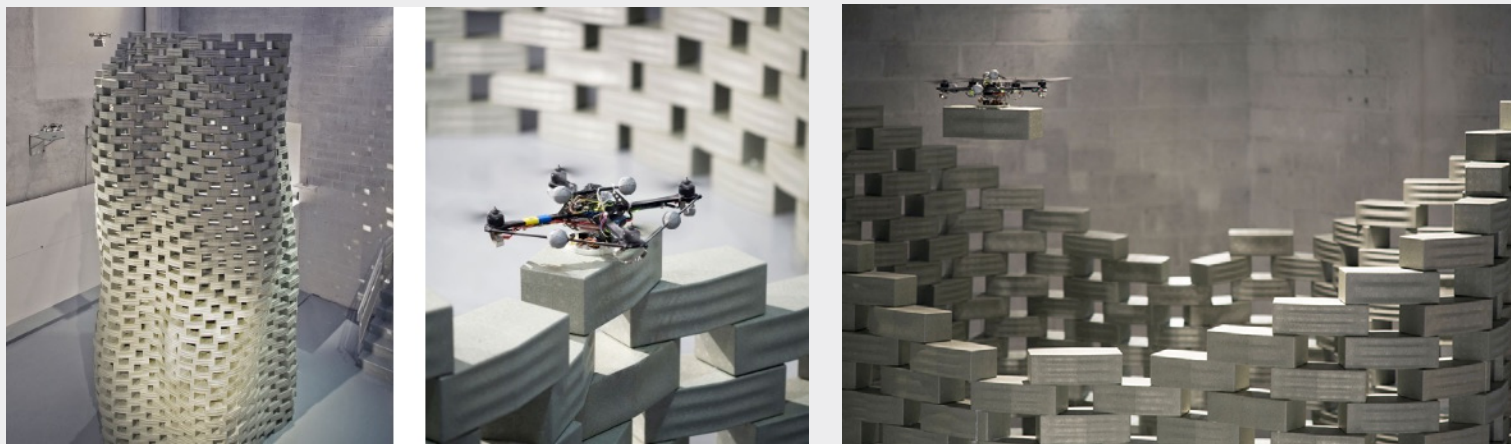
*AR application on a mobile tablet at a construction ©Trimble*

## 3.4. Robotic Applications and Drones

The future of the construction industry is evolving towards a safer, cost-effective, and environmentally friendly building process, driven by the advantages of speed, precision, and sustainability offered by innovative technologies such as robotic applications and drones. The opportunities provided by these technologies can be summarized as follows:

- **Efficiency and Speed:** Robotic applications complete repetitive and time-consuming tasks quickly, reducing the need for human labor. For instance, processes like bricklaying or plastering can be done in minutes rather than hours. Drones automate tasks such as mapping construction sites, conducting area scans, and preparing progress reports.
- **Cost Savings:** Robotic systems not only reduce labor costs but also prevent project delays, minimizing the risk of budget overruns. Drones offer low-cost solutions for expensive and time-consuming processes such as land analysis, measurements, and inspections.

- **Safety:** Robots take on dangerous tasks in high-rise buildings or confined spaces, ensuring worker safety. For example, tasks such as window cleaning, welding, or heavy lifting become safer with robots. Drones conduct surveillance and inspections of risky areas without human intervention.
- **Precision:** Robotic systems work with millimeter precision, delivering flawless results, especially for complex and detailed designs. This reduces material waste and ensures high-quality craftsmanship. Drones use high-resolution cameras and sensors to scan construction sites, providing detailed measurements and analyses.
- **Sustainability and Innovation:** Robotic applications optimize material usage, reduce waste, and enhance energy efficiency. For example, 3D printing technology can help reduce resource consumption in building construction.



Drone-built Architectural Structure  
© Gramazio Kohler Research, ETH Zurich



Tile-laying Robot  
© Gramazio Kohler Research, ETH Zurich

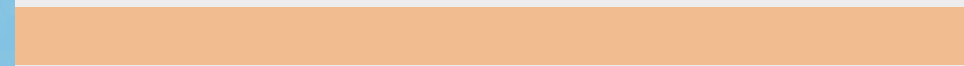


Brick-laying Robot  
© Gramazio Kohler Research, ETH Zurich



Section 4

# IoT-BASED BUILDING TECHNOLOGIES



## 4.1. Internet of Things (IoT) in Buildings

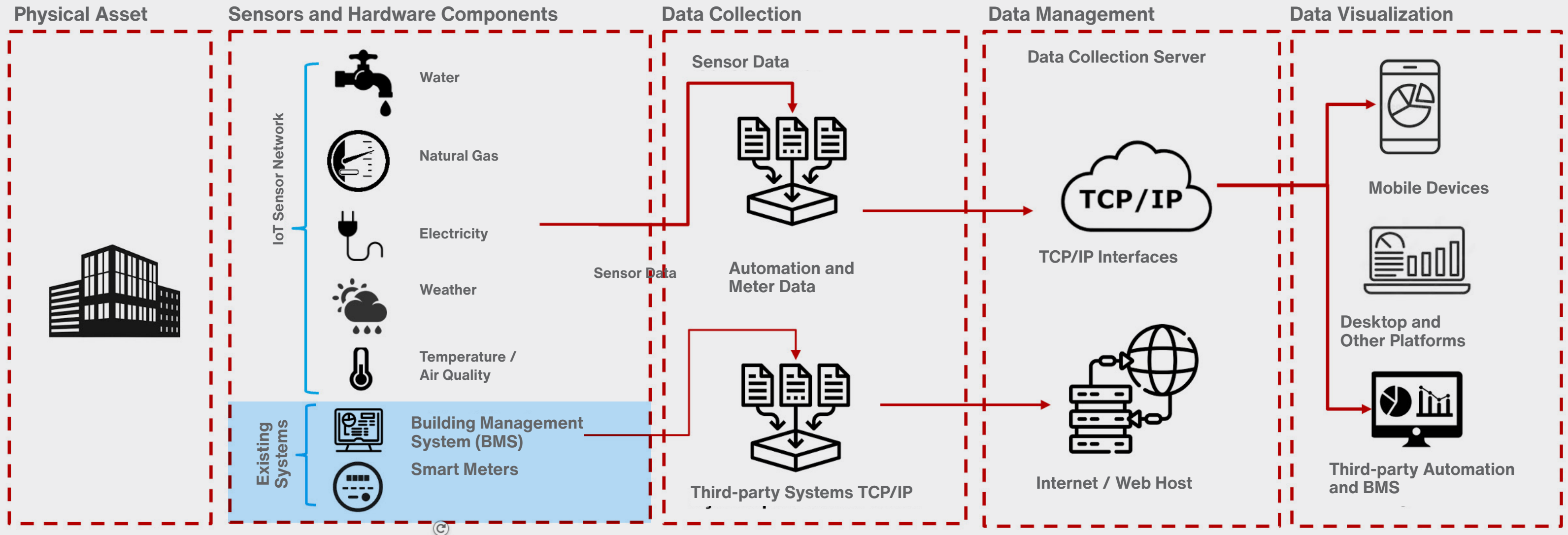
*The Internet of Things (IoT) is a technology that enables physical devices, vehicles, and home appliances equipped with sensors, software, and network connectivity to collect and share data over a network. This technology allows devices to connect to one another through the internet, facilitating the exchange of information. The term “Internet of Things” (IoT) was coined by Kevin Ashton in 1999. While working at Procter & Gamble, Ashton proposed using Radio Frequency Identification (RFID) chips to track products throughout the supply chain. This idea laid the foundation for tracking and managing physical objects in the digital realm, paving the way for the development of the IoT concept.*

### **Internet of Things (IoT) in Buildings**

The transition from smart buildings to IoT-based interactive building technologies refers to the replacement of centralized and rule-based systems with flexible, user-friendly solutions supported by real-time data sharing and artificial intelligence. This evolution has transformed buildings from mere systems that optimize energy consumption into environmentally friendly, user-centric ecosystems that can learn through artificial intelligence. In the future, IoT-based building technologies are expected to play a critical role in achieving net-zero carbon goals and effectively integrating renewable energy sources.



# 4.1. Internet of Things (IoT) in Buildings



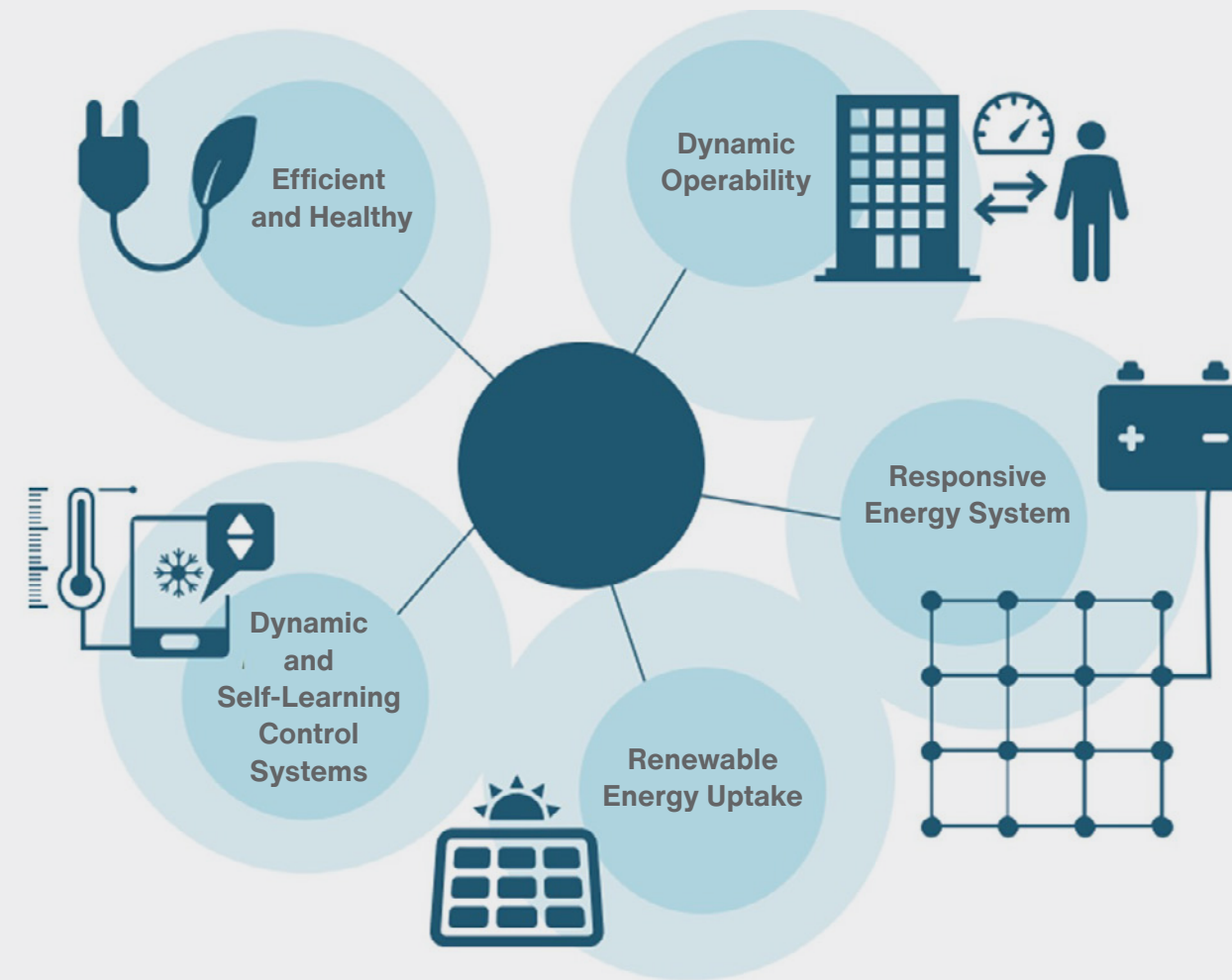
## 4.2. Pillars of Modern Smart Building Technologies

### Efficient and Healthy

Smart buildings aim to provide healthy and cost-effective living spaces. In smart buildings, energy efficiency, indoor air quality, continuous monitoring of operational parameters, and ensuring comfort according to changing conditions are prominent features. The fundamental principle of smart buildings is to maximize energy efficiency while not compromising on comfort.

### Dynamic and Self-Learning Control Systems

Dynamic and self-learning control systems make buildings truly “smart” by optimizing energy consumption and the interactions between different systems inside the building. For example, automatic hydraulic balancing in heating and cooling systems or self-learning thermostats can ensure indoor comfort with the highest energy efficiency and minimal operating costs.



*Five pillars of a smart built environment [14]*

### Renewable Energy Uptake

Smart buildings should utilize renewable energy sources more to meet their energy needs. This can be achieved through self-generation of energy using sources like solar panels, solar thermal systems, or geothermal energy, or by being part of an energy network through regional biomass heating systems and waste heat usage.

### Dynamic Operability

Dynamic operability allows users to adjust automation levels according to their individual preferences. At the same time, the system adapts to energy needs and price changes, enabling users to control the energy flow. Connected devices like smart thermostats, appliances, and security systems can be part of this process.

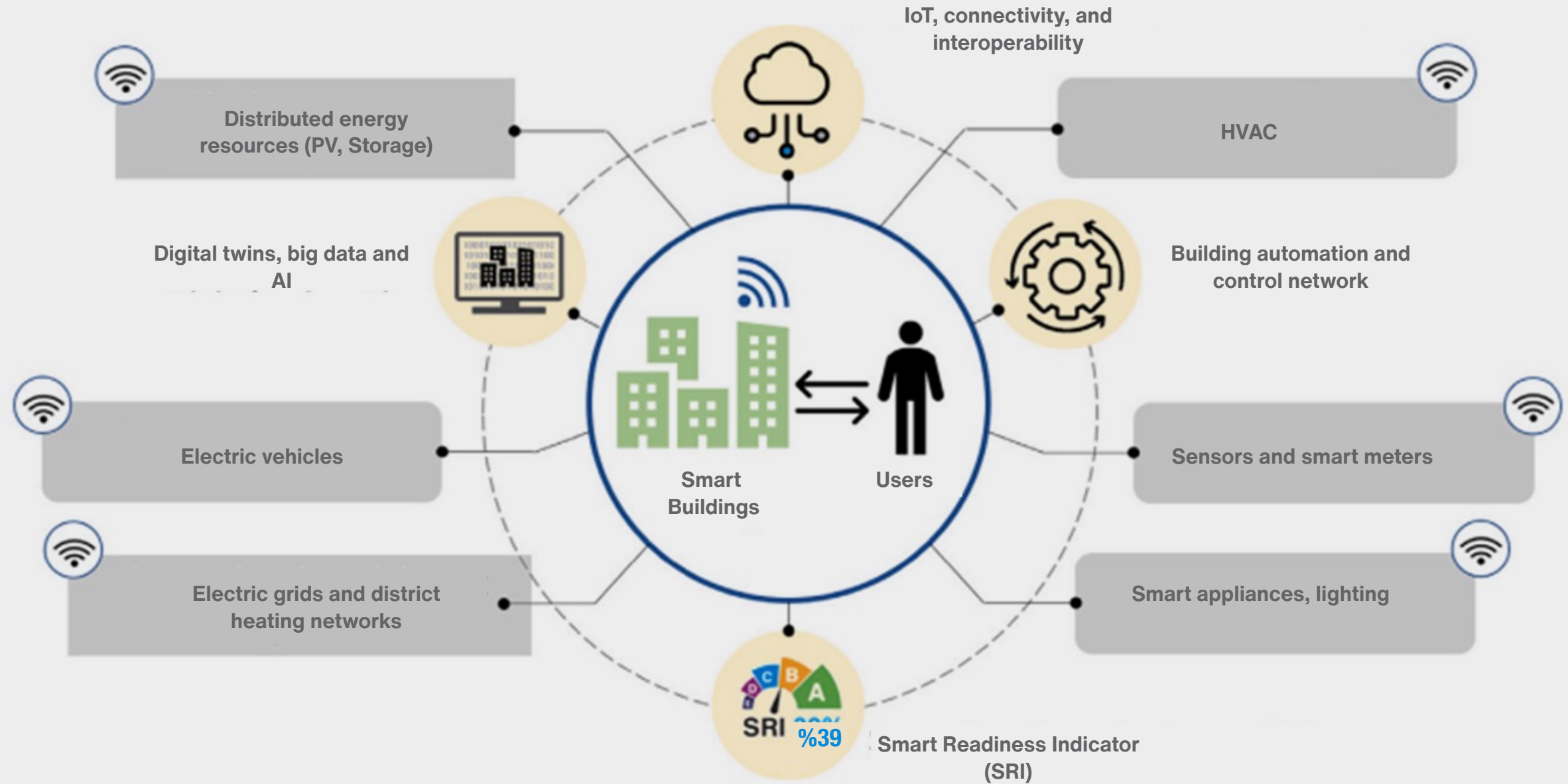
### Responsive Energy System

Smart buildings must be able to quickly respond to the needs of energy systems such as electricity, district heating, and cooling networks. Especially during peak demand times, solutions like storage technologies contribute to balancing the grid and support the wider use of electric vehicles. For this, buildings should be able to actively participate in electricity markets with demand management and energy storage capacities.

# 4.3. . Energy Management, Comfort, Predictive Maintenance, and Reporting

## What is IoT-Based Energy Management?

IoT-based energy management and comfort systems are integrated systems designed to increase energy savings, reduce operating costs, and optimize comfort conditions for users in buildings. These systems ensure a balance between energy and comfort in modern buildings through smart sensors, IoT devices, AI-powered data analytics systems, and remote management capabilities.



*Smart Building Concept and Interaction with its Environment [16]*

## 4.3. . Energy Management, Comfort, Predictive Maintenance, and Reporting

### System Functions:

- **Real-Time Energy Monitoring:** Smart meters and energy sensors monitor the consumption of energy sources such as electricity, water, and gas in real time.
- **Energy Optimization:** AI-supported analytics identify inefficiencies in energy consumption and ensure the more efficient use of energy resources.
- **Renewable Energy Integration:** IoT systems manage renewable energy sources such as solar panels and wind turbines to achieve energy savings.
- **Lighting Control:** By maximizing the use of daylight or adjusting lighting levels based on building usage density, energy consumption is reduced while maintaining comfort.
- **Air Quality Management:** Carbon dioxide (CO<sub>2</sub>) and particulate matter sensors monitor indoor air quality and optimize ventilation systems to increase the intake of fresh air.
- **Personalized Comfort:** IoT systems that learn individual user preferences personalize environmental factors such as temperature, lighting, and other conditions in individual rooms.

### Key Components:

- **Sensors and Actuators:** Sensors, which form the core of IoT devices, continuously monitor parameters such as temperature, humidity, light intensity, energy consumption, and air quality. Actuators control HVAC systems, lighting, and other building equipment.
- **IoT Networks:** Wireless networks (such as Wi-Fi, ZigBee, LoRaWAN) that enable data exchange between devices form the essential communication infrastructure of the system.
- **Data Analytics and Artificial Intelligence:** The collected data is continuously analyzed using artificial intelligence and machine learning algorithms. This enables the identification of inefficiencies in energy consumption and comfort issues, as well as the detection of potential areas for improvement.
- **Cloud-Based Management Platform:** Data from sensors is stored and processed in the cloud. Users can monitor reports and recommendations related to energy consumption through these platforms.
- **Mobile and Web Applications:** Sensor data and the overall system status can be monitored via user-friendly mobile or web interfaces, allowing remote access and intervention.

### Operation:

- **Data Collection:** *Sensors continuously collect data within the building, creating a real-time energy consumption profile and monitoring environmental conditions.*
- **Analysis and Optimization:** The collected data is analyzed, and the HVAC and lighting systems are dynamically optimized based on the building's operation profile, user load, and outdoor temperature.
- **Remote Management:** Users can track energy consumption via mobile applications, control specific devices, and adjust energy settings.
- **Predictive Maintenance:** The system detects anomalies in devices, identifying maintenance needs in advance. This prevents device failures and reduces operational costs.
- **Monitoring and Reporting:** Through detailed reports, users can analyze energy consumption and comfort conditions, track carbon footprints, and evaluate deviations from sustainability targets in real-time.

## 4.4. Smart Readiness Indicator (SRI)

The Smart Readiness Indicator (SRI) is a European Union (EU) initiative designed to assess how effectively buildings utilize digital technologies and smart solutions. This indicator evaluates a building's ability to integrate smart technologies in enhancing energy efficiency, optimizing energy demand, and meeting user needs.

### Key Elements of the Smart Readiness Indicator

- **Energy Efficiency:** The ability of smart systems to reduce energy consumption and optimize the use of renewable energy sources.
- **User Comfort and Health:** The potential of smart solutions to enhance the living comfort and well-being of building occupants.
- **Flexibility and Adaptability:** The integration of smart systems with energy grids and the optimization of energy consumption based on demand.

### Calculation Method

SRI is calculated based on the level of smart services present in different technical domains of a building (e.g., heating, cooling, lighting). The calculation process includes the following steps:

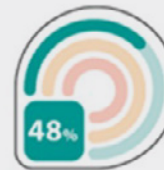
- **Identification of Functional Areas:** The building's various systems, such as HVAC (heating, ventilation, and air conditioning), lighting, and building automation, are identified.
- **Service Level Assessment:** The current state of smart services in each technical area is evaluated across different categories (e.g., energy management, user control).
- **Weighting:** The contribution of each service to the building's energy efficiency and user comfort is weighted accordingly.
- **Scoring:** Based on the assessment results, the building receives a total SRI score, typically ranging from 0 to 100.



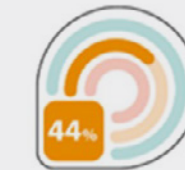
43%



Energy Savings & Maintenance



Comfort, Ease & Wellbeing



Grid Flexibility



### IMPACTS

	Energy efficiency	Maintenance and fault protection	Comfort	Convenience	Health and well-being	Information to occupants	Energy flexibility & storage	SRI
Total	39%	18%	60%	71%	48%	59%	0%	42%
Heating	32%	18%	62%	55%	24%	74%	0%	
Sanitary hot water	17%	0%	45%	70%	67%	83%	0%	
Cooling	65%	51%	78%	72%	61%	55%	0%	
Controlled ventilation	41%	0%	55%	60%	34%	44%	0%	
Lighting	85%	14%	90%	100%	83%	15%	0%	
Dynamic building envelope	10%	0%	31%	56%	22%	46%	0%	
Electricity	10%	0%	-	-	-	68%	0%	
Electric vehicle charging	-	38%	-	82%	-	84%	0%	
Monitoring and control	52%	43%	62%	72%	45%	64%	0%	

SRI Calculation Scorecard and Weighting Matrix[18]

## 4.5. The World's Smartest and Greenest Building: The Edge



*The Edge, Amsterdam*

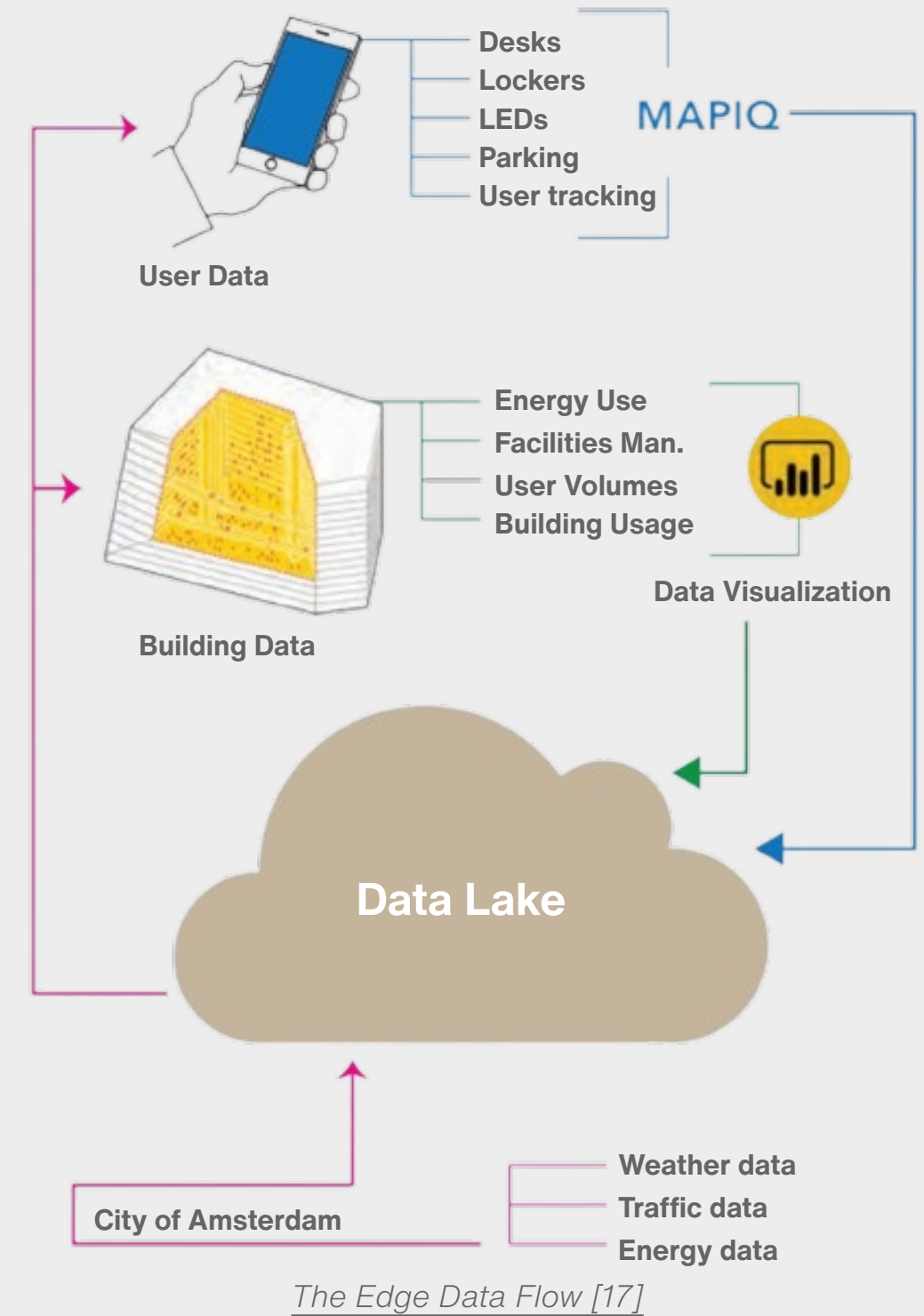
*The Edge defines the future model of office buildings by integrating IoT and sustainability technologies. Its smart features enhance employee comfort and productivity while minimizing the building's environmental impact, earning it the recognition as “the world's smartest and greenest building.”*

“With 28,000 sensors, the Edge leverages IoT technology to optimize energy consumption, temperature, lighting levels, and user density, providing a personalized and highly efficient work experience. In addition to showcasing the best applications of IoT, the building incorporates various sustainable design elements that reduce its carbon footprint, such as solar panels, natural lighting solutions, and rainwater management systems. By utilizing big data analytics, the building continuously enhances its performance through comprehensive assessments of employee behavior and operational efficiency. Moreover, the Networked Infrastructure Management (NIM) system integrates building automation and energy systems into a centralized platform, improving both efficiency and user comfort..”

# 4.5. The World's Smartest and Greenest Building: The Edge



*The Edge, Amsterdam*

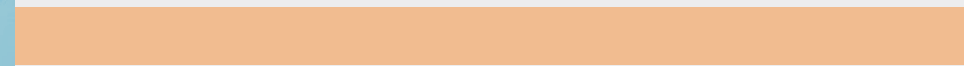


*The Edge Data Flow [17]*



Section 5

# **INNOVATIVE HVAC AND LIGHTING TECHNOLOGIES**

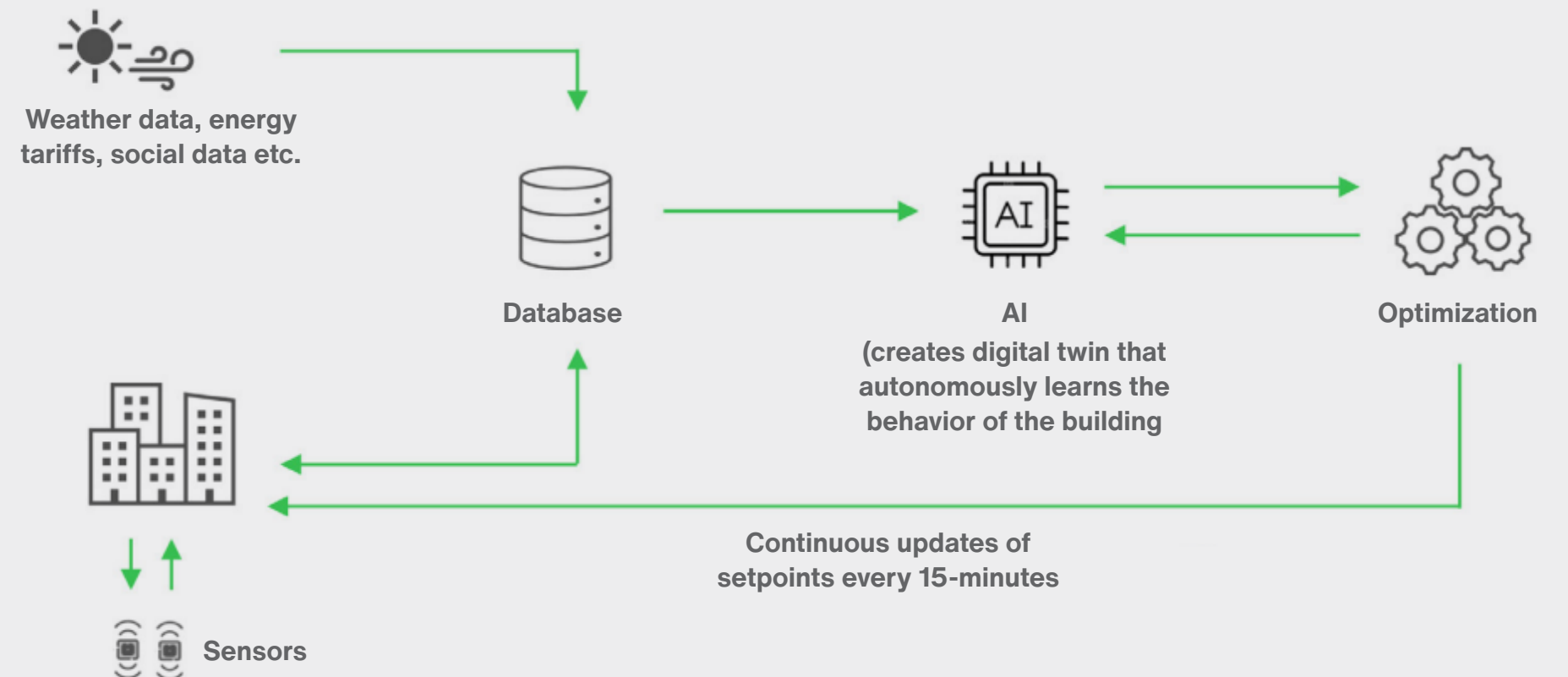


## 5.1. AI-Powered HVAC Systems

Artificial intelligence (AI)-powered HVAC (heating, ventilation, and air conditioning) and lighting systems are designed to provide enhanced control, efficiency, and user comfort compared to traditional systems. These systems optimize energy consumption through AI algorithms and connected devices, while continuously monitoring and adjusting environmental conditions.

### Key features of these systems:

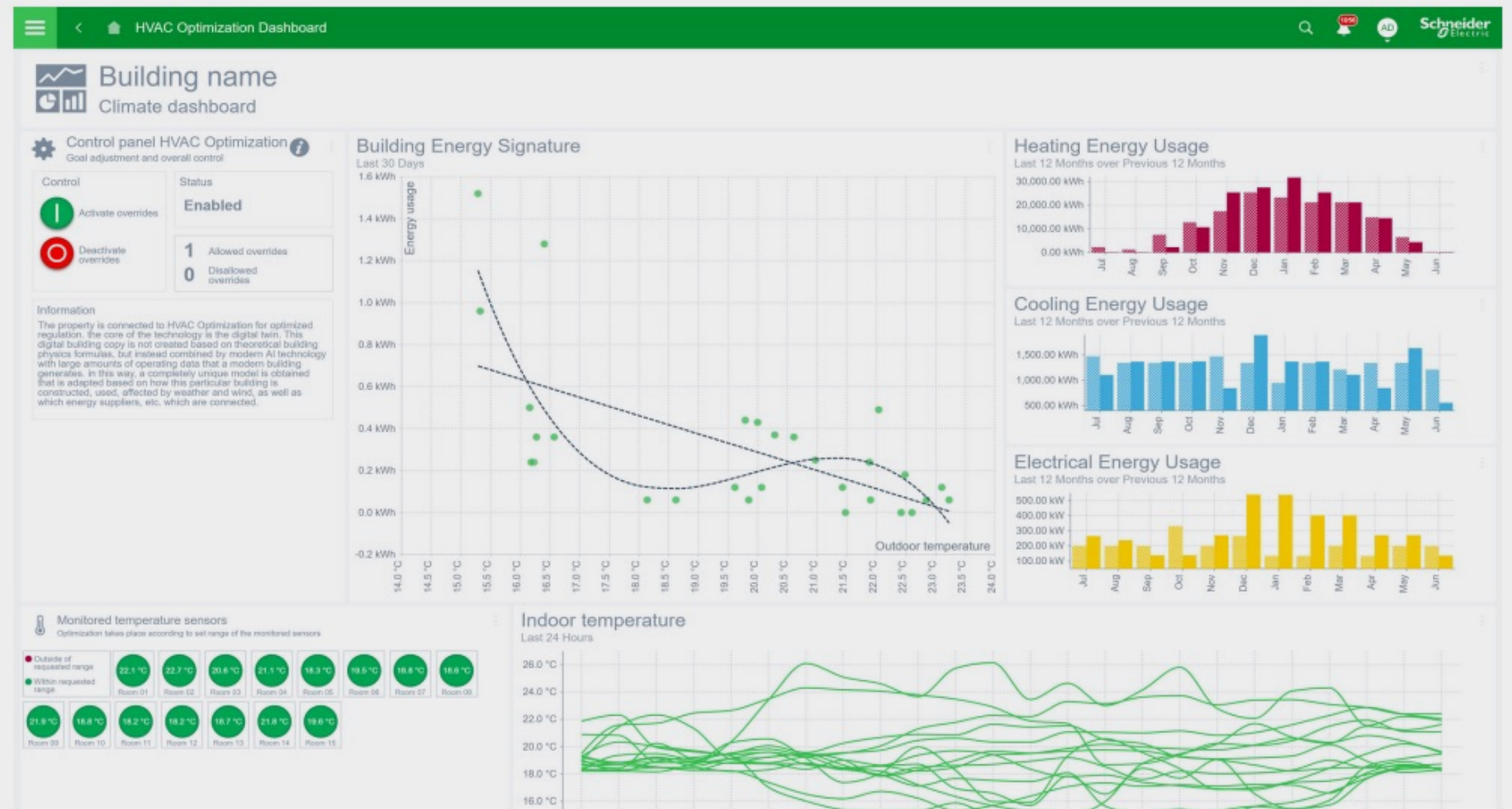
- **Artificial Intelligence and Machine Learning:** AI-powered HVAC systems continuously collect and analyze data from sensors, including temperature, humidity, air quality, lighting intensity, and energy consumption. By learning user behaviors, the building's energy usage profile, and external environmental conditions, these systems operate more efficiently over time. They can detect potential issues before failures occur and notify maintenance requirements.
- **Energy Efficiency:** AI-powered HVAC systems minimize energy consumption by dynamically managing energy use based on the time of day, usage patterns, and outdoor weather conditions. They seamlessly integrate with renewable energy sources such as solar or wind power, automatically balancing electricity consumption from the grid.



*AI-Powered Building Management System Data Flow [19]*

# 5.1. AI-Powered HVAC Systems

- **IoT (Internet of Things) Integration:** Smart thermostats, sensors, and control units continuously collect data within a centralized network framework, responding to user demands under AI control. The system can be remotely managed via mobile applications or web interfaces.
- **User Comfort:** AI-powered systems maximize individual comfort needs by balancing different demands simultaneously and enabling advanced personalization by learning user preferences. Indoor air quality, CO<sub>2</sub> levels, and particulate matter concentrations are continuously monitored and automatically reported.
- **Advanced Reporting:** The system provides users with detailed reports on energy consumption, calculates its carbon footprint, and optimizes performance accordingly.



AI-Powered BMS Energy Performance and Comfort Data Display [19]

© Schneider Electric

## 5.2. High-Efficiency Sustainable HVAC Solutions

### THE CONCEPT OF HIGH-EFFICIENCY SUSTAINABLE HVAC

High-efficiency and sustainable HVAC technologies are designed to save energy while minimizing environmental impact. These systems aim to reduce building energy consumption, lower carbon footprints, and improve efficiency in installation processes. Solutions such as renewable energy integration, smart control systems, and environmentally friendly refrigerants play a key role in enhancing energy efficiency. Additionally, compact and modular designs offer time and cost advantages in installation and maintenance. Some of these technologies, which can be exemplified in a broad context, are listed below.

- **Heat Pumps:** Modern heat pumps offer significantly more efficient and sustainable solutions compared to traditional systems by widely applying the principle of low-temperature heating. In low-temperature heating, the system operates at around 35-55°C, reducing energy consumption and increasing heat pump efficiency. As a result, conventional high-temperature radiator applications can be replaced with highly efficient systems such as underfloor heating, which is compatible with heat pumps. The electrification of heating through heat pumps enables integration with renewable energy sources, supported by modern heat storage technologies. This eliminates dependence on

fossil fuels and significantly reduces carbon emissions.

- **Next-Generation Heat Storage:** Today, heat storage technologies have advanced considerably, incorporating phase change materials (PCMs) such as paraffin, salt hydrates, or bio-based compounds, specifically developed for these applications alongside traditional solutions. This innovation enhances cost efficiency by reducing peak energy demand while improving the sustainability of renewable energy systems. These next-generation storage solutions play a critical role in the future success of both individual and centralized heating systems.
- **Magnetic Bearing Technology:** Magnetic bearing (oil-free) compressors minimize friction losses and reduce maintenance requirements in chillers and heat pumps. In recent years, the cost of this technology has decreased, leading to its widespread adoption.
- **Modular HVAC Technology:** Modular HVAC solutions are key tools in achieving sustainability and energy efficiency goals. These systems are scalable based on user needs and offer both economic and ecological advantages by reducing environmental impact. Their designs are compatible with prefabrication and digital technologies such as BIM.



*Factory Manufactured Modular Main Plant Pipin ©  
AlternativeHEAT*

## 5.3. Passive Climate Control Solutions

### WHY ARE PASSIVE CLIMATE CONTROL SOLUTIONS IMPORTANT?

*Passive climate control solutions play a crucial role in achieving sustainability and net-zero carbon goals. Implementing these systems requires both blending traditional knowledge with modern technologies and rethinking existing design approaches.*

In this context, some key applications where technology contributes include:

- **Natural Ventilation:** Natural ventilation systems can be optimized through building automation systems equipped with sensors. For example, windows can automatically open and close based on outdoor weather conditions and indoor temperature variations, reducing energy consumption while enhancing indoor comfort. Natural ventilation strategies can also be integrated with mechanical solutions such as heat recovery ventilation.
- **Thermal Mass Energy Storage:** *In buildings with high thermal mass, solar radiation absorbed by walls or floors during the day is stored as heat. Algorithms analyzing outdoor conditions predict when and at what rate this stored heat should be released at night. These predictions help manage heating and cooling demands more efficiently within the building.*
- **Solar Control:** Sunshades can dynamically adjust based on the position and intensity of the sun, monitored through sensors. When integrated with algorithms that learn occupant movement patterns within the building, these systems not only enhance energy efficiency but also maximize the use of natural daylight.
- **Green Roof Applications:** Green roofs and vertical garden systems can be managed more effectively through sensors monitoring plant health and soil conditions. Additionally, analyzing the thermal insulation performance of these systems enables improvements in energy savings and material efficiency. For instance, correlating indoor temperature data with plant growth models can reduce energy consumption while making maintenance processes more sustainable. This approach enhances both the energy efficiency of the structure and the durability of the materials used.



Passivehaus Certified Foleshill Health Centre

## 5.3. Passive Climate Control Solutions

### FOLESHILL HEALTH CENTRE

As the first Passivhaus-certified health center in the UK, Foleshill Health Centre stands out with its sustainable climate control features. Constructed using a modular design, the building offers a warm indoor environment in winter and a cool one in summer, thanks to its high insulation properties. The insulation level exceeds current regulatory requirements by 40%. The building also excels in airtightness, with air leakage across the entire structure equivalent to a hole the size of a golf ball, minimizing energy losses. A 100% fresh air, heat recovery ventilation system is used in conjunction with heat pumps. The entire energy demand of the building is met by photovoltaic panels on the roof, while all lighting is provided by energy-efficient LED lamps. The windows are high-performance, triple-glazed, and can be opened for natural ventilation when needed. Additionally, as a passive climate control measure, they are equipped with sunshades to block direct sunlight in the summer, helping maintain comfortable indoor temperatures. Foleshill Health Centre's energy consumption is less than one-third of a conventional health center of similar size. With its sustainable climate control, energy efficiency, and modular construction features, it serves as a model for future developments. [20]



*Passivehaus Certified Foleshill Health Centre*



## 5.4. Air Quality and Comfort

### AIR QUALITY: THE RELATIONSHIP BETWEEN HEALTH AND TECHNOLOGY

- Air quality is a critical factor that directly impacts individuals' quality of life and health. With the increasing time spent indoors, the need for innovative technologies to ensure clean air has grown significantly. Today, air purification devices provide effective solutions against various pollutants. Technologies such as HEPA filters, UV-C lamps, activated carbon filters, and photocatalytic oxidation remove allergens, volatile organic compounds (VOCs), fine particulates, and pathogens to create a healthier environment. However, the regular maintenance of these systems, their energy consumption, and potential side effects (e.g., ozone emission from certain ionizing devices) must be carefully considered.
- Air quality sensors monitor real-time parameters such as CO<sub>2</sub>, PM<sub>2.5</sub>, VOCs, and humidity. The data collected by these sensors allow ventilation systems to be automatically optimized, reducing energy consumption while ensuring high air quality. Continuous air quality monitoring not only improves indoor health but also raises awareness among users about their environmental conditions.

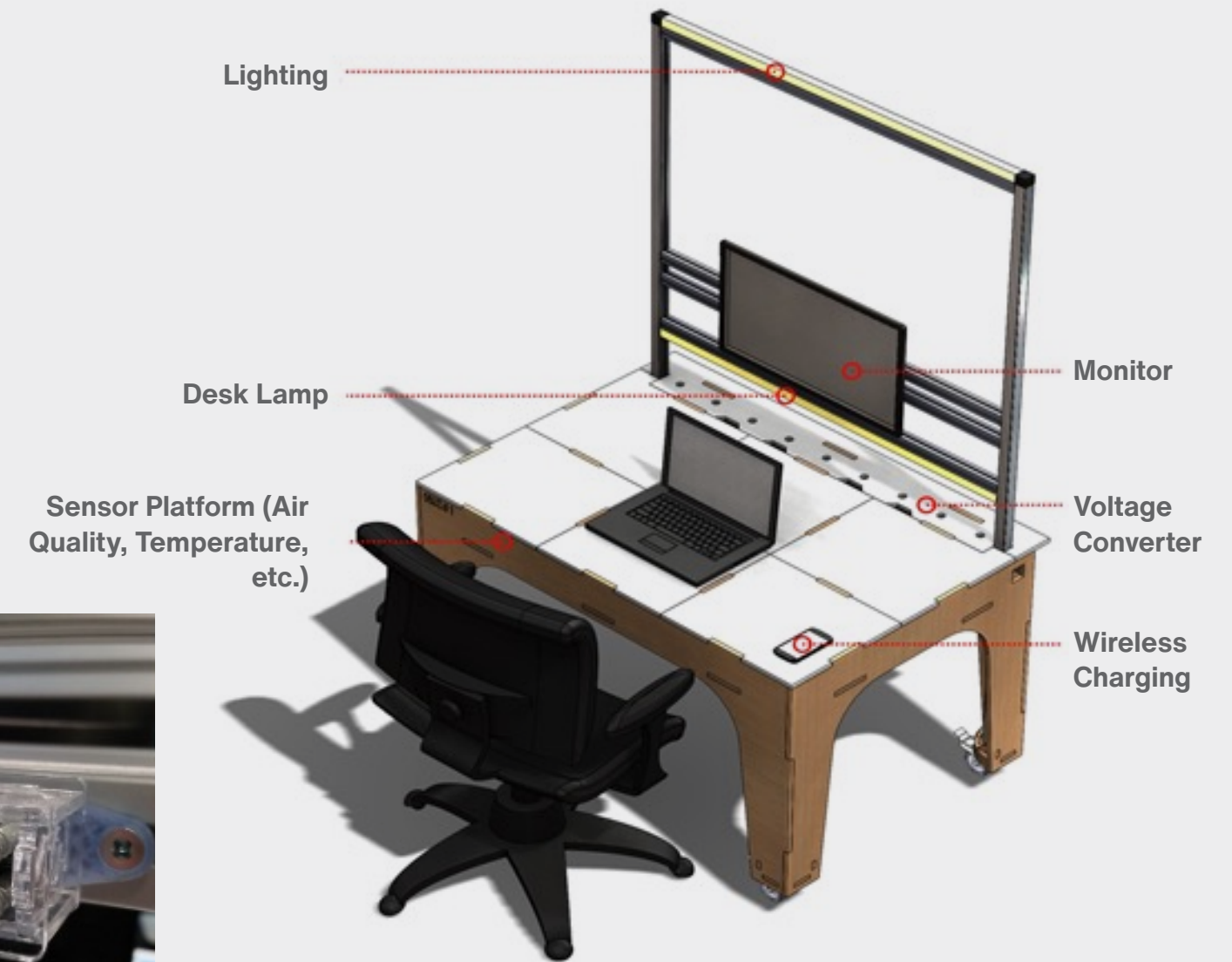
### COMFORT

- Comfort is both a physical and psychological experience, requiring a balance of environmental factors such as temperature, humidity, air velocity, lighting, and noise levels. Technology plays an increasingly important role in enhancing both individual and shared living spaces. For example, personalized comfort technologies provide solutions that adjust temperature or air velocity according to users' individual needs. Desk-based micro-climate control devices or smart thermostats help save energy while improving user satisfaction. However, the applicability of these technologies in shared spaces may be limited.
- Comfort measurement sensors continuously monitor environmental factors and integrate with building automation systems. By analyzing temperature, humidity, air velocity, and noise levels, these systems help create more comfortable living spaces. In large buildings, such technologies offer an effective solution to prevent user complaints and enhance energy efficiency.

## 5.4. Air Quality and Comfort

### THE FUTURE WORKPLACE

Arup's "Desk of the Future" project offers an innovative solution to modern office needs by enhancing employee comfort while optimizing energy efficiency. This smart desk integrates a range of intelligent technologies designed to personalize the work environment and minimize energy consumption. Equipped with advanced sensors that measure environmental factors such as temperature, humidity, lighting levels, and CO<sub>2</sub> concentration, the desk continuously collects and analyzes data to provide optimal working conditions. As a result, comfort variables like ambient temperature and lighting levels are automatically maintained at ideal settings. An integrated motion sensor detects when the user approaches, automatically switching on desk lamps and monitors. When the user leaves, it powers them down, ensuring energy savings. Additionally, the desk utilizes Power over Ethernet (PoE) technology to optimize device energy consumption and prevent unnecessary power loss. A web-based control system further enhances user experience by allowing employees to adjust lighting and environmental conditions according to their personal preferences. Beyond improving individual working comfort, the Desk of the Future contributes to office sustainability goals by creating an ecosystem that supports both energy efficiency and productivity. This user-centric design sets a new benchmark for integrating technology into the workplace, taking modern office concepts to the next level.



*The Future Smart Desk Prototype*

## 5.5. Innovative Lighting Solutions

### WHAT IS AN INNOVATIVE LIGHTING SOLUTION?

*Innovative lighting systems are solutions that reduce environmental impacts while minimizing energy consumption, offering long-term cost advantages for users. These solutions combine modern technological possibilities with design and sustainability principles.*

- **LED Lighting Solutions:** LED (Light Emitting Diode) technology is an energy-efficient alternative, offering 80-120 lumens of light per watt, which makes it up to 80% more efficient than traditional bulbs. With a lifespan of 25,000 to 50,000 hours, LED lighting reduces the need for frequent maintenance or replacement. Available in various color temperatures (2700K - 6500K) and CRI (Color Rendering Index) values (>80), LEDs can be used in both indoor and outdoor applications. Their environmental sustainability is enhanced as they do not contain harmful substances such as mercury and are 95% recyclable.
- **Smart Lighting Systems:** These systems maximize energy savings through occupancy and lighting sensors, timers, and IoT (Internet of Things) integration. For instance, in an office environment, only occupied areas can be illuminated with 50% less energy. Controlled through protocols such as Zigbee or Wi-Fi, these systems can be managed via mobile devices or smart home platforms. Lighting control systems analyze parameters such as lighting levels, energy consumption, and user behavior to optimize energy use.



*Application of Circadian Lighting Solution in Hospital Environment*

## 5.5. Innovative Lighting Solutions

- **Natural Lighting:** These systems direct daylight, ranging between 5000-10,000 lux, into spaces, potentially reducing energy costs by up to 30%. Light tubes transport daylight from the roof into indoor areas with light transmission efficiency of up to 90%, while prismatic glass or reflective surfaces ensure even light distribution.
- **Circadian Lighting:** Circadian lighting solutions mimic natural light cycles with dynamic lighting control, providing color temperatures between 2000K and

6500K. In the morning, blue light with wavelengths of 450-480nm enhances alertness, while in the evening, warm white light (2700K) supports melatonin production. This type of lighting optimizes sleep patterns, reduces stress levels, and has a positive impact on health. It can achieve 10-15% energy savings in hospitals and offices. LED-based circadian systems are often integrated with smart control units, automatically adjusting based on the changes throughout the day.

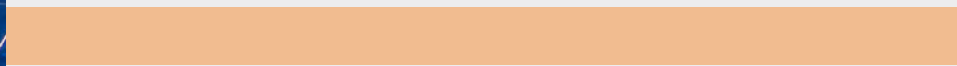


*The lighting transitions smoothly throughout the day, from a gentle sunrise to bright daylight. In the afternoon, the light becomes warmer and gradually dims. During the night, patient rooms are kept dark, while common areas and corridors are equipped with night lighting that does not contain blue light [@Chromaviso](#)*



Section 6

# ELECTRIFICATION OF BUILDINGS



## 6.1. Key Elements of Electrification



### WHAT DOES ELECTRIFICATION OF BUILDINGS MEAN?

Electrification of buildings is one of the strategies to reduce carbon emissions in order to achieve net-zero carbon targets. This concept refers to the use of electric alternatives in place of fossil fuel-powered heating, cooling, kitchen, and domestic hot water systems in buildings. The primary goal of this process is to meet energy demand with electricity sourced from renewable energy, thereby reducing carbon emissions to zero.



## 6.1. Key Elements of Electrification

- **Transformation of Heating and Cooling Systems**
  - **Heat Pumps:** At the core of electrification, heat pumps extract heat from the surrounding air, ground, or water to provide efficient heating or, by reversing the cycle, cooling.
  - **Electric Heaters:** While smaller-scale electric heaters can also be used, their energy efficiency is lower compared to heat pumps.
- **Hot Water Production**
  - Instead of traditional fossil fuel-powered water heating systems, heat pumps or solar-powered electric water heaters are preferred.
- **Cooking Systems**
  - Gas stoves are replaced with induction cooktops or other electric cooking appliances.
- **Insulation and Energy Efficiency Measures**
  - Electrification strategies should be supported by additional energy efficiency measures such as insulation and solar control glazing to reduce the building's energy demand.
- **Smart Grid and Energy Storage Integration**
  - Electrification should be integrated with demand management and energy storage technologies. For instance, solutions like home batteries or rooftop solar panels can reduce energy costs and carbon footprints.

### The Role of Electrification in the Net-Zero Carbon Target

- **Alignment with Renewable Energy:** For electrification to be successful, electricity must be sourced from renewable sources such as wind, solar, and hydroelectric power. Powering buildings with electricity generated from fossil fuels merely shifts carbon emissions to another source.
- **Reduction of Carbon Emissions:** Electrification significantly reduces carbon emissions from the building sector. In regions like Europe, where buildings account for 40% of total carbon emissions, electrification can help bring this figure close to zero.
- **Transition Away from Fossil Fuels:** By eliminating the use of fossil fuels such as natural gas, coal, and oil, electrification enhances energy security and reduces costs.

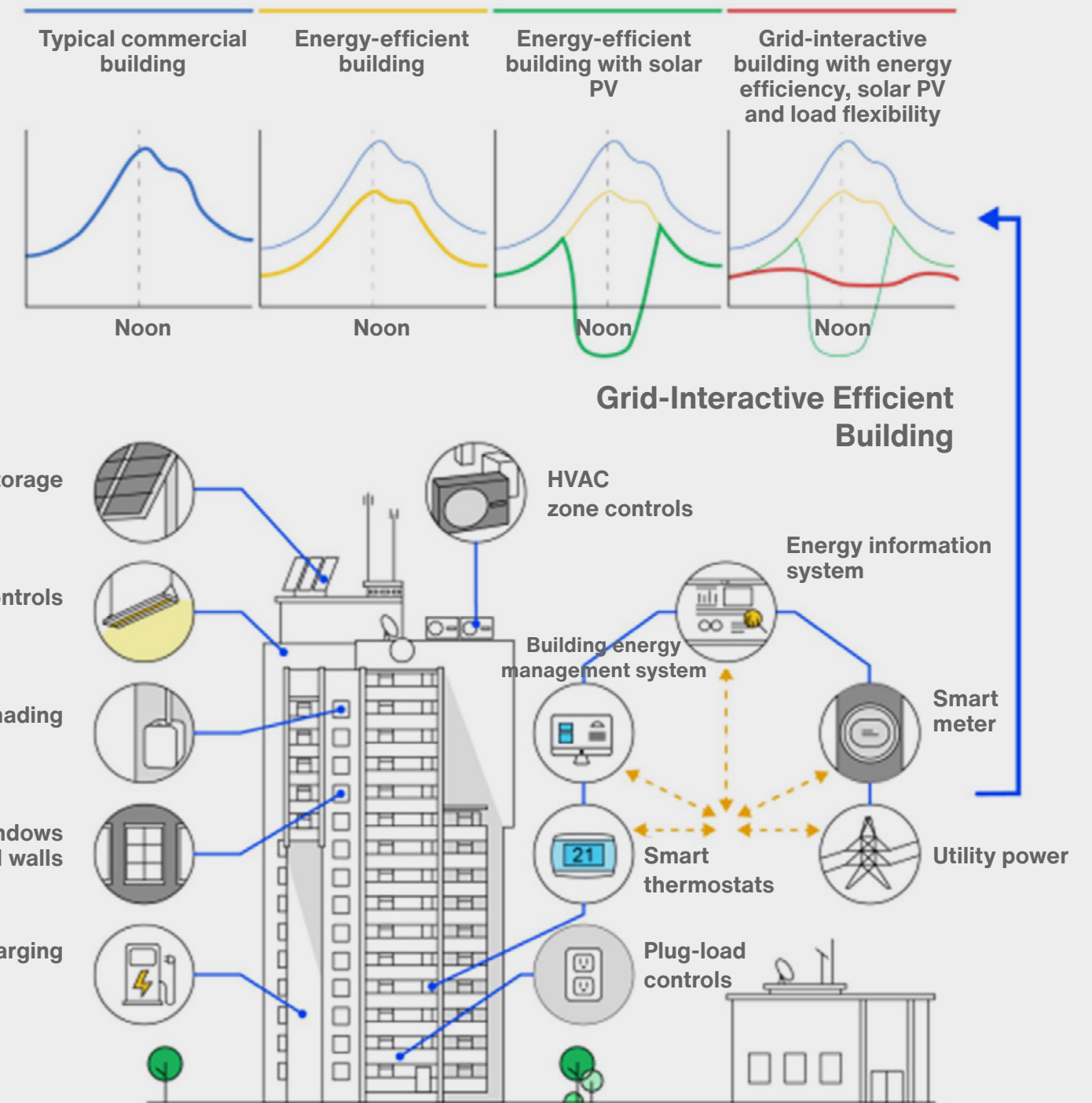
### Challenges Faced

- **Cost:** Initial investment costs can be high, particularly for retrofitting older buildings with electric systems.
- **Electric Grid Load:** The increased electricity demand from electrification may require upgrades and capacity expansion in existing grid infrastructure.
- **Policy and Incentive Gaps:** Government-supported incentives, tax benefits, and regulations are crucial for the widespread adoption of electrification.

## 6.2. Building-Scale Strategies

*Electrification of buildings is a crucial step in enhancing energy efficiency, reducing carbon emissions, and maximizing the benefits of renewable energy sources. This process encompasses a wide range of strategies, from passive design to smart storage solutions.*

- **Design-Oriented Strategies**
  - **Demand Control:** Reducing total and peak energy demand through passive design, advanced building insulation, and adaptive comfort approaches.
  - **Proper System Sizing:** Selecting appropriately sized equipment, particularly in low-energy buildings, and adopting low-temperature heating and cooling strategies instead of conventional methods to minimize overall carbon emissions.
  - **Flexibility:** Using smart control systems to shift electricity demand to periods of high renewable energy availability.
- **Demand Management and Storage**
  - **Flexible Load Management:** Shifting energy demand from heating, cooling, and electric vehicle charging to periods of lower overall energy consumption.
  - **Energy Storage:** Implementing electrical and thermal energy storage solutions to reduce peak energy demand and optimize renewable energy utilization.



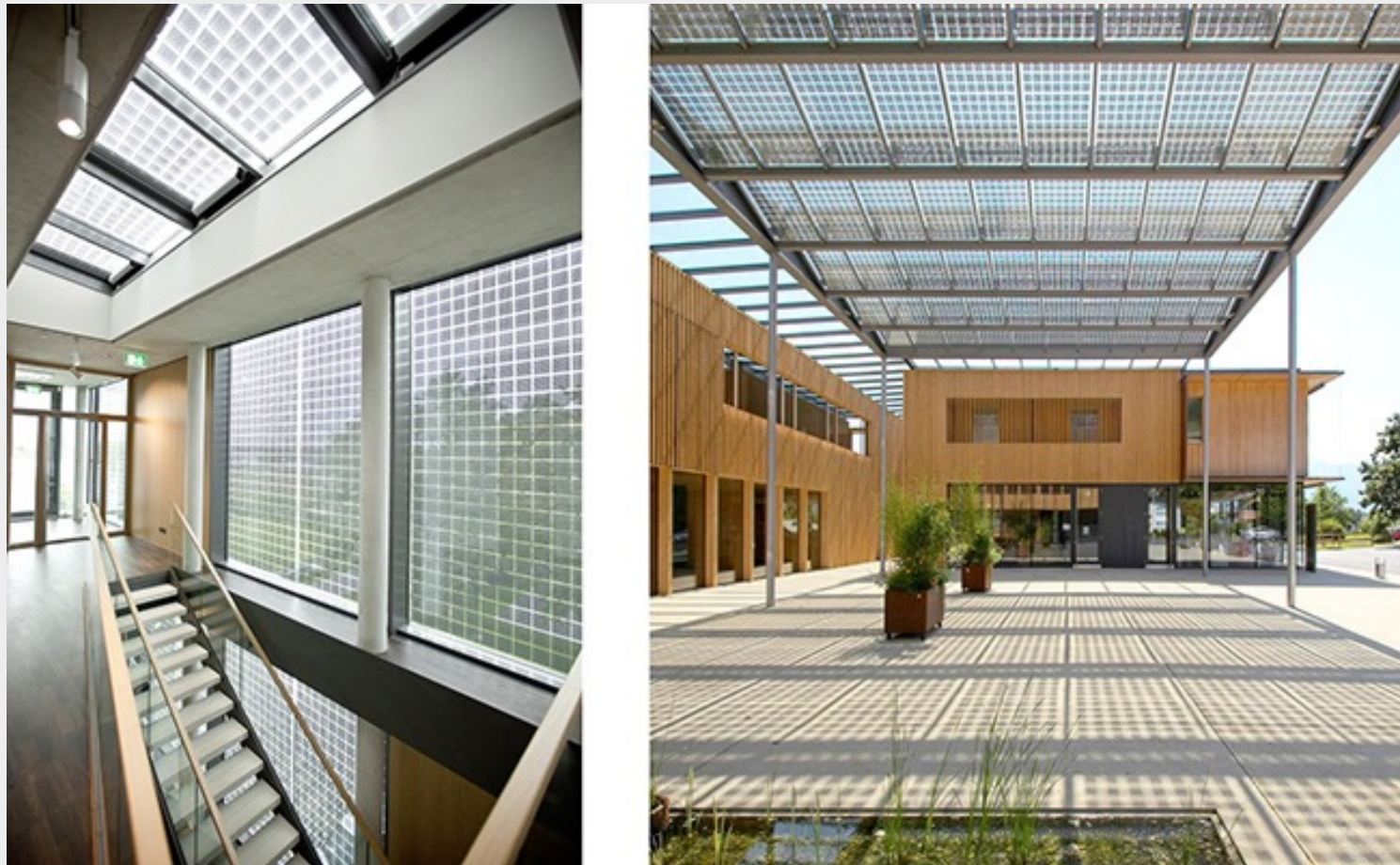
*Grid-interactive efficient buildings [23]*

## 6.2. Building-Scale Strategies

- **Energy Generation and Storage Systems**
  - **On-Site Generation:** Utilizing renewable energy technologies, such as building-integrated photovoltaic systems.
  - **Smart Charging and Storage:** Using electric vehicles as energy storage units through smart charging systems.
- **Data Management and Optimization**
  - **Data Collection:** Monitoring and analyzing energy, temperature, and usage data to optimize building performance.
  - **Dynamic Pricing:** Leveraging fluctuations in electricity pricing to optimize energy costs.
- **System Integration:**
  - **Grid Interaction:** Designing buildings for bidirectional interaction with energy grids, such as building-to-grid, building-to-building, and building-to-district heating network integration.



## 6.3. Renewable Energy Technologies



*Building-Integrated Photovoltaic Panels* © Sunways AG

### **BUILDING-INTEGRATED PHOTOVOLTAIC (BIPV) SYSTEMS**

Building-Integrated Photovoltaic (BIPV) systems are photovoltaic solutions designed as integral components of a building, replacing conventional construction materials while generating electricity. These panels can be integrated into roofs, façades, or glass surfaces, serving both functional and aesthetic purposes. Unlike traditional solar panels, BIPV systems act as structural elements, eliminating the need for additional mounting and seamlessly blending into architectural designs. For instance, roof-integrated panels can also function as waterproofing materials, replacing standard roofing components. Similarly, semi-transparent façade panels allow natural daylight penetration while producing energy. The efficiency of these systems typically ranges from 15% to 22%, depending on the panel technology. Monocrystalline cells offer higher efficiency, while thin-film panels are often chosen for their aesthetic compatibility. BIPV systems significantly reduce building energy consumption, increase renewable energy adoption, and play a crucial role in minimizing carbon footprints.

## 6.3. Renewable Energy Technologies

### SOLAR THERMAL FAÇADE AND ROOF SYSTEMS

Solar thermal façade and roof systems are integrated technologies that convert solar energy directly into heat for hot water production and building heating. These systems typically consist of copper- or aluminum-based collectors, which are installed on building roofs or façade surfaces. While roof-mounted systems are arranged at an optimal tilt to maximize solar energy absorption, façade-integrated systems serve as both a functional and aesthetic building element. Solar thermal systems operate with an average efficiency of 40–70% and can generate temperatures typically ranging between 60–90°C. These systems are an ideal solution for buildings requiring heating, as they help reduce energy costs and fossil fuel consumption. Roof-integrated solar panels also function as waterproofing layers, providing dual benefits. Meanwhile, in façade applications, the system enhances thermal insulation while contributing to the building's architectural aesthetics.



*Vacuum Tube Solar Thermal Façade Application ©Philippon-Kalt Architectes*

## 6.3. Renewable Energy Technologies



*Building-Integrated Wind Turbines*



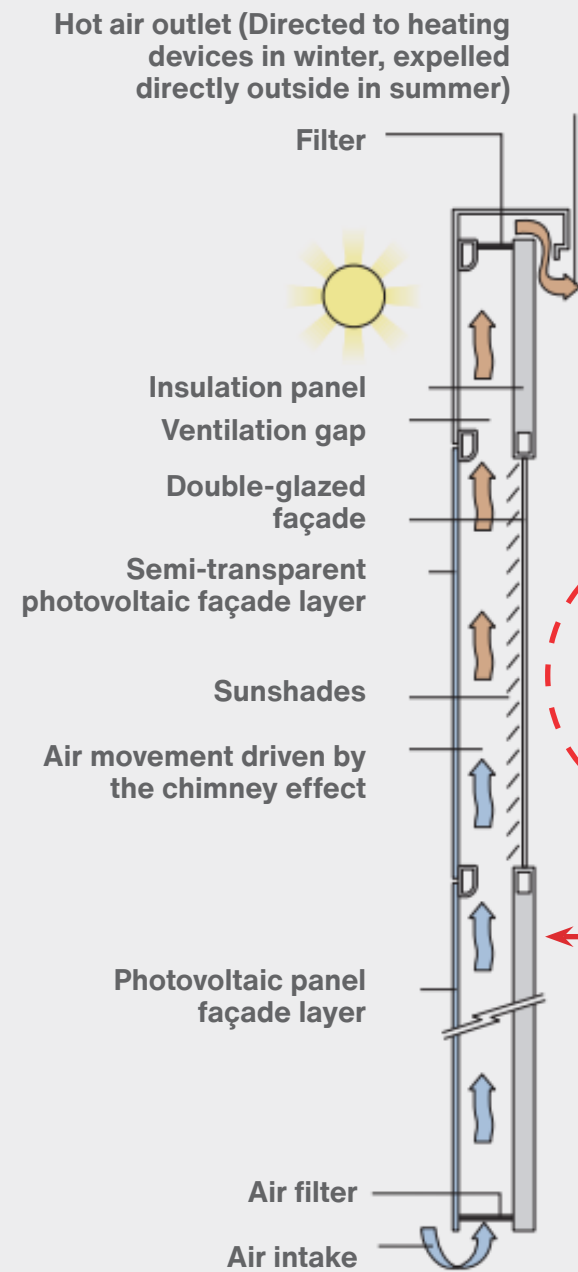
### **BUILDING-INTEGRATED WIND TURBINES**

Building-Integrated Wind Turbines are systems that convert wind energy into electrical energy by being integrated into a building's roof or façades. These turbines are typically installed at locations on high-rise buildings where wind flow is strong, providing small-scale energy production ranging from 1 to 10 kW. Vertical-axis turbines are commonly used in urban applications due to their quiet operation and low maintenance requirements. Although horizontal-axis turbines offer higher efficiency, they require larger installation areas and higher wind speeds. Wind turbines generally start operating at a minimum wind speed of 3 m/s and require wind speeds of 7–10 m/s for optimal performance. During integration, aerodynamic designs are employed to ensure smooth wind flow onto the turbine blades. In addition to meeting part of the building's energy needs, these systems introduce a visual innovation and contribute to sustainable building design. Integrated turbines are typically equipped with smart control systems to enhance energy production efficiency and operate in synchronization with the building's electrical grid.

## 6.3. Renewable Energy Technologies

### POMPEU FABRA LIBRARY, MATARÓ

Pompeu Fabra Library is one of Europe's first integrated photovoltaic (PV) system projects that combines renewable energy use with sustainable design elements in Mataró. The project aimed to balance energy strategy, indoor comfort, lighting quality, aesthetics, and cost considerations. The building's south façade features a 255 m<sup>2</sup> double-layer ventilated façade with semi-transparent polycrystalline PV modules. These modules allow natural light to enter, reducing the need for artificial lighting while providing a total capacity of 20 kWp. The façade contributes to cooling the PV cells through natural ventilation in summer and aids indoor heating in winter with a heat recovery system. The modules are made of high-temperature-resistant tempered glass. Pompeu Fabra Library is a pioneering project that integrates building-integrated photovoltaics, a ventilated double-skin façade, and heat recovery principles.



*Pompeu Fabra Library's Naturally Ventilated Double-Skin Photovoltaic Façade*

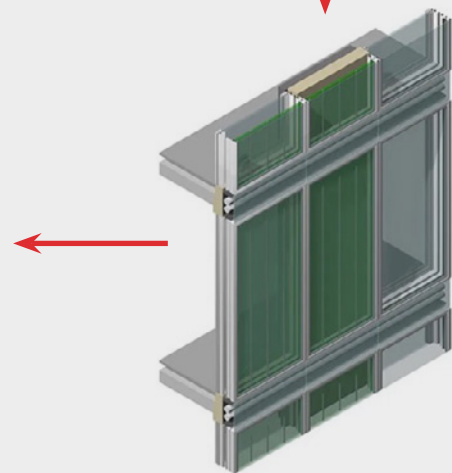
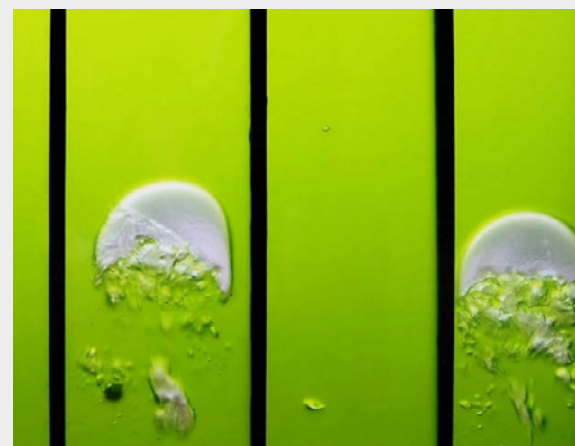
## 6.3. Renewable Energy Technologies



### SOLARLEAF PHOTOBIOREACTOR FAÇADE, HAMBURG

The BIQ (Bio Intelligent Quotient) project is the world's first pilot initiative for implementing a bioreactive façade in residential buildings. The SolarLeaf bioreactive façade panels enable algae to perform photosynthesis and produce biomass using nutrient-rich water, carbon dioxide, and sunlight. The heat generated in this process is utilized for building heating. With a total surface area of 200 m<sup>2</sup>, these panels supply the building's entire energy needs and reduce CO<sub>2</sub> emissions by 6 tons annually. This pilot project is a successful example of an integrated energy system that captures CO<sub>2</sub> while simultaneously producing heat through biomass. The generated biomass is transported in a closed-loop system to the building's energy management center, where it is processed for biogas production. The biogas can be used for electricity and heat generation,

while the CO<sub>2</sub> released during biogas combustion is recaptured and fed back to the algae, ensuring a continuous cycle. Photosynthesis is supported by photobioreactors installed on the southwest and southeast façades of the building, optimizing light permeability and CO<sub>2</sub> transfer for algae growth. This innovative system also provides additional benefits such as dynamic shading, thermal insulation, and noise reduction, highlighting its versatile potential. The BIQ project pioneers an environmentally friendly urban model by producing carbon-neutral energy. Furthermore, by capturing CO<sub>2</sub> through algae, it also functions as a carbon storage system. As a result, the project stands out as a leading example of a low-carbon urban future, contributing to the development of more livable and sustainable cities.



*Photobioreactor Façade* © Arup

## 6.3. Renewable Energy Technologies



*Photovoltaic Panels Integrated into the Station Roof*

### **CENTRAL STATION PHOTOVOLTAIC ROOF, BERLIN**

Berlin's new central station, inaugurated in 2006, presented a significant opportunity to showcase the city's commitment to solar energy on a large scale. The glass canopy covering the new station, measuring 320 meters by 17 meters, incorporates 178,000 transparent photovoltaic cells. This 1,700 m<sup>2</sup> solar energy system has a maximum power output of 178 kW<sub>e</sub>, generating 160,000 kWh of electricity annually. This production accounts for 2% of the station's annual electricity consumption.



*Photovoltaic Façade Application ©Walker Simpson Architects*

### **SOLAR LIBRARY, MANCHESTER**

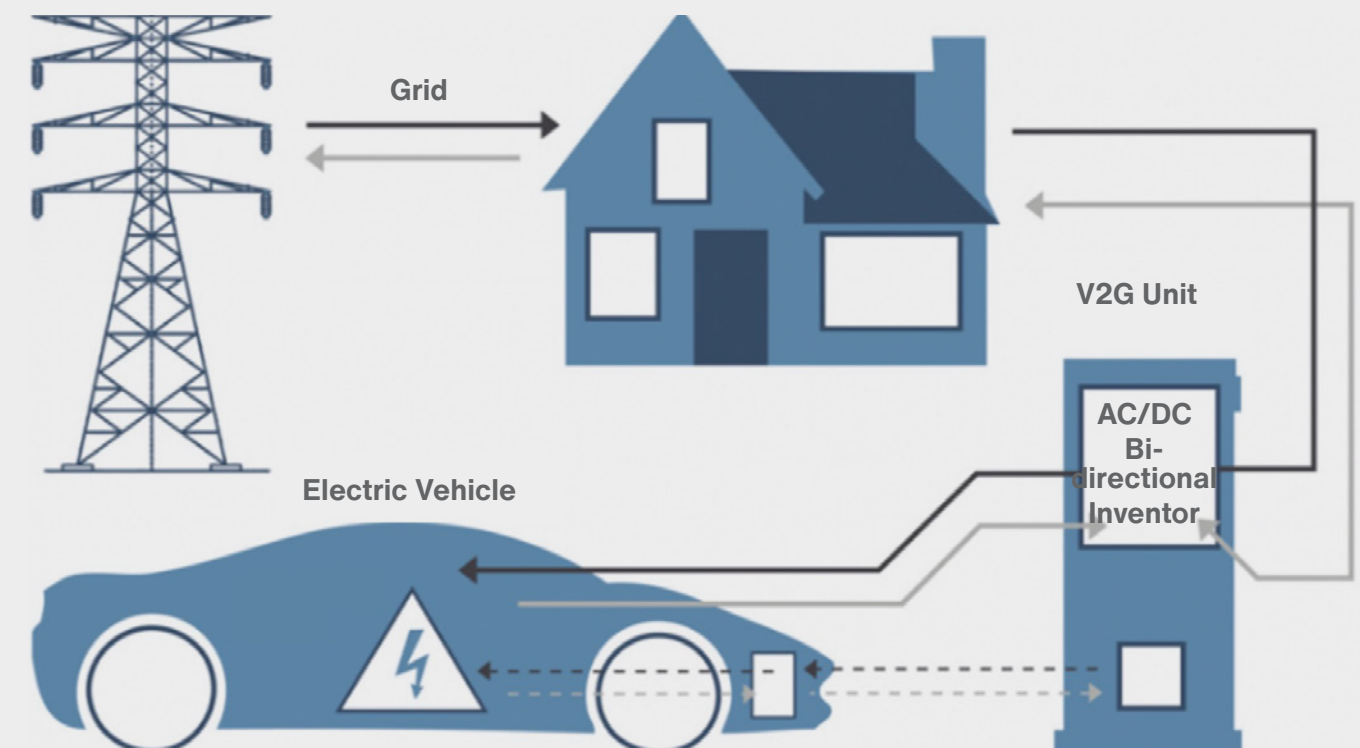
As part of Harpurhey's extensive urban regeneration efforts, Manchester City Council has constructed a new public library and high school building in the heart of the district. Reflecting Manchester's commitment to becoming a "green city," the library integrates low-energy design elements and renewable energy systems into its architecture to reduce carbon emissions. The design incorporates passive climate control strategies, such as natural ventilation, alongside building-integrated photovoltaic (BIPV) systems on both the façade and roof. The photovoltaic façade serves a dual purpose, contributing to the library's natural ventilation while generating clean energy.

## 6.4. Energy Storage Technologies – Electricity

- **Lithium-Ion Batteries:** Lithium-ion batteries are the most commercially widespread and accessible energy storage technology. With their high energy density and fast charge-discharge capabilities, they operate efficiently in intermittent renewable energy systems such as solar and wind power. Declining production costs have made these batteries attractive across a broad range of applications, from residential use to commercial buildings.
- **Flow Batteries:** Flow batteries are an ideal technology for large-scale energy management, as their energy capacity can be flexibly scaled by increasing the size of storage tanks. Electrolyte fluids used for energy storage and transfer are kept in separate positive and negative tanks, where chemical reactions store and release energy. Due to their rechargeable chemical components and minimal reliance on mechanical parts, they offer long lifespans and low maintenance requirements. Developed for commercial buildings and industrial facilities with high energy demand and long storage durations, this technology provides high-capacity energy storage solutions. However, flow batteries come with high costs.
- **Bidirectional Charging Systems (V2G – Vehicle-to-Grid):** Bidirectional charging systems, which allow electric vehicle batteries to be integrated into building energy grids, are revolutionizing energy management. These systems enable vehicle owners to contribute to the building's energy grid, balancing energy demand. When integrated with renewable energy systems, they offer significant cost advantages during energy consumption.
- **Solid-State Batteries:** Solid-state batteries are considered one of the most innovative future solutions in energy storage due to their safe and long-lasting structure. These batteries feature enhanced energy density compared to current technologies. Still in the development phase, this technology promises to increase energy storage capacity in commercial applications.

### WHY ARE STORAGE TECHNOLOGIES IMPORTANT?

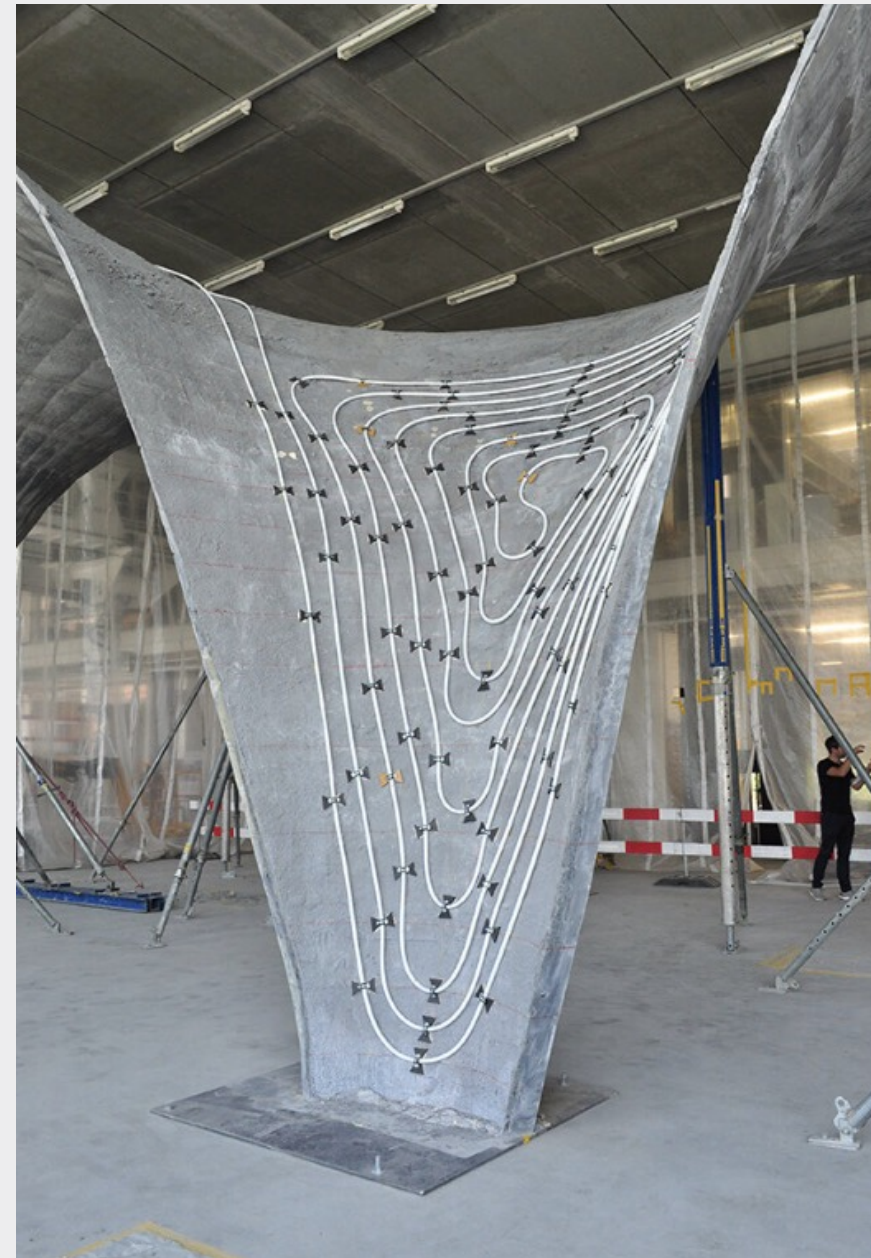
The electrification of buildings is a key step toward transitioning to sustainable energy systems by reducing reliance on fossil fuels. In this process, electrical and thermal storage technologies play a crucial role in ensuring that energy systems operate more efficiently, flexibly, and reliably. Given that electrification covers energy-intensive and variable demands such as heating, cooling, and hot water, the importance of storage systems becomes even more evident.



*-Vehicle-to-Grid (V2G) Bidirectional Charging System*

## 6.5 Energy Storage Technologies – Thermal

- **Phase Change Materials (PCM):** Phase change materials (PCM) are an innovative storage technology that enhances energy efficiency by stabilizing temperature fluctuations. These materials store thermal energy during the transition between solid and liquid states and vice versa. When integrated into wall panels or HVAC systems in commercial buildings, PCMs help reduce energy costs and promote sustainable energy management.
- **Thermoactive Systems:** Building structural elements can serve as effective thermal energy storage solutions. For instance, heating and cooling systems embedded in concrete slabs help moderate indoor temperature fluctuations and offer low operating costs. This method can be applied in both new and existing buildings to enhance energy efficiency.
- **Aquifer Thermal Energy Storage (ATES):** Aquifer storage systems utilize natural underground resources to provide long-term energy storage solutions. These systems work in conjunction with heat pumps to meet seasonal energy storage needs and support the transition to low-carbon energy solutions. They are particularly suitable for large-scale residential projects and commercial areas.
- **Ice Thermal Storage:** Ice thermal storage systems store energy during off-peak hours when electricity prices are lower and release it during peak hours. This technology is ideal for meeting the cooling demands of commercial buildings while also balancing energy demand fluctuations in the grid, ultimately helping to reduce energy costs.



© Block Research Group.



© A/S Research Group

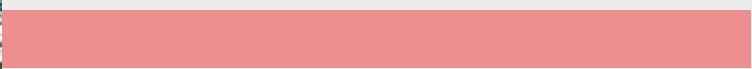
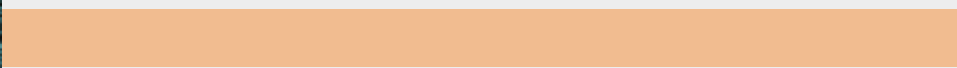


Examples of Thermoactive System Applications



Section 7

# **INNOVATIVE MATERIALS**

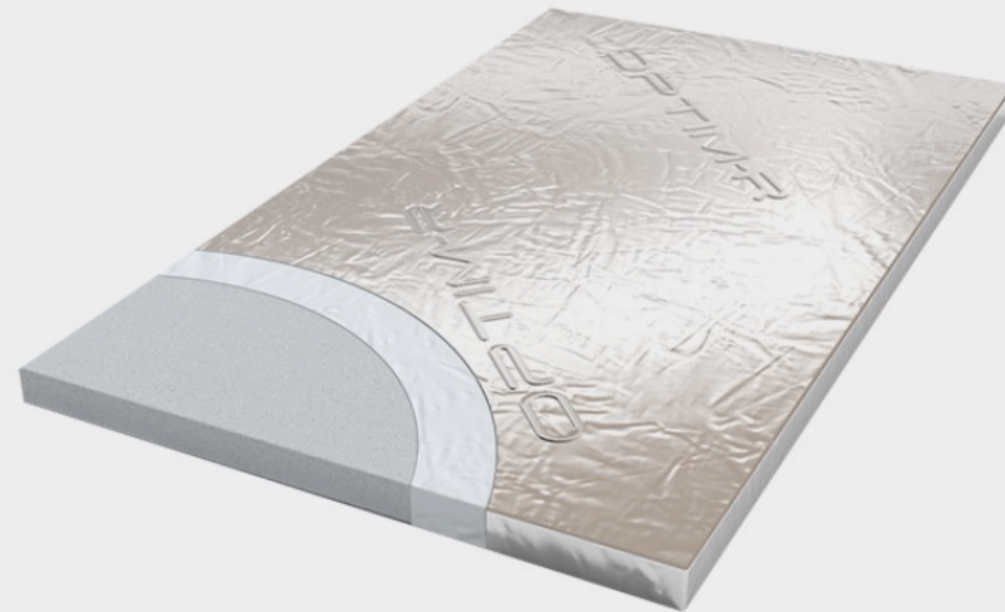


## 7.1. Types of Innovative Materials

### WHY ARE INNOVATIVE MATERIALS IMPORTANT?

Innovative insulation materials play a crucial role in achieving energy efficiency and sustainability goals in buildings.

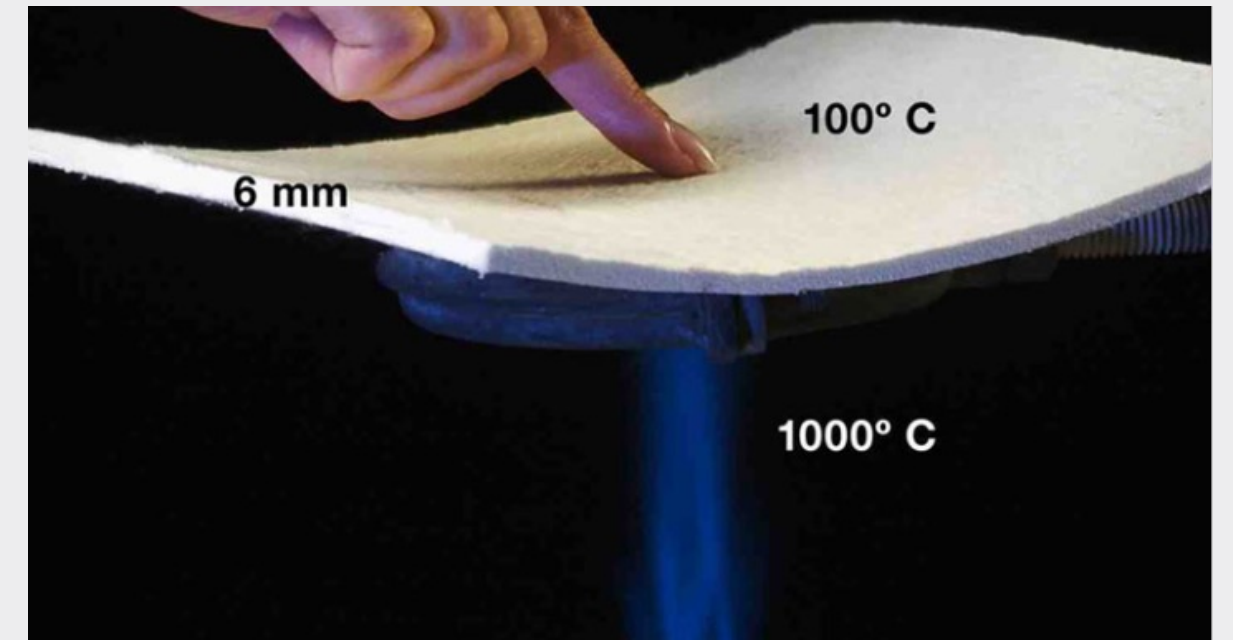
Compared to traditional methods, these materials offer higher performance, with the potential to reduce energy consumption and minimize environmental impacts. Technologies such as aerogels, Vacuum Insulation Panels (VIPs), and bio-based insulation materials are utilized in various building applications due to their unique physical and chemical properties.



*Vacuum Insulation Panel ©Kingspan*

### VACUUM INSULATION PANELS (VIPs)

Vacuum Insulation Panels (VIPs) are high-performance insulation materials composed of a vacuum-sealed core material and a protective film. With a thermal conductivity of approximately 0.004 W/mK, VIPs provide an effective insulation solution in confined spaces due to their thin structure. They are commonly used in roofs, slim wall systems, and insulated facade claddings, as well as in the appliance and transportation industries. However, due to their sensitivity to vacuum leakage, careful application is required, and their cost is higher compared to other insulation materials.



*Aerogel Insulation Material ©Aspen*

### AEROGEL

Aerogel is one of the lightest solid materials in the world, consisting of 90-99% air and typically silica-based, though it can also be produced using materials such as carbon or aluminum oxide. With an extremely low thermal conductivity of 0.013-0.017 W/mK, aerogel offers exceptional insulation performance. It stands out for its fire resistance, lightweight nature, and ease of transportation, making it ideal for various applications. However, its high cost and fragile structure require careful handling during installation. Aerogel is used in building applications such as glass insulation, façade panels, and roofs, as well as in oil and gas pipelines, chemical plants, and NASA space projects.

## 7.1. Types of Innovative Materials



*Hemp-Based Insulation Panel Application ©Hempitecture*

### **BIOLOGICAL INSULATION MATERIALS**

Biological insulation materials are eco-friendly insulation solutions derived from renewable resources. These materials provide energy efficiency while being environmentally friendly and biodegradable at the end of their lifespan. They are produced from natural materials such as hemp, cellulose, cork, and sheep wool. Hemp-based materials provide moisture control, while cork stands out for its lightweight structure and water resistance. Cellulose offers a low-cost alternative, and sheep wool provides fire resistance and thermal insulation. Biological insulation materials are commonly used in wall, roof, and floor insulation. However, they have some disadvantages, such as performance loss in high-humidity environments and the need for protection against pest attacks. Despite these drawbacks, their environmentally friendly nature makes them increasingly preferred in sustainability-focused projects.

## 7.1. Types of Innovative Materials

### What is Phase Change Material?

Phase change material is an innovative technology used in energy storage applications. Phase change materials absorb a large amount of latent heat during the transition from solid to liquid and release this energy during the reverse phase change. They are typically designed to operate within a specific temperature range, helping to stabilize energy systems by balancing temperature fluctuations. Phase change materials are particularly used in thermal storage systems and renewable energy applications to enhance efficiency.

### PHASE CHANGE MATERIALS (PCM)

#### Properties and Operating Principle

The key feature of these materials is their high latent heat of phase change, which allows them to store large amounts of energy during the phase change process. During this process, the material's temperature remains constant, minimizing temperature fluctuations. Phase change materials are typically designed to operate within a specific temperature range, ensuring effective storage and use of heat energy. The heat transfer efficiency of phase change materials is often enhanced through encapsulated structures or panel systems. For example, materials like paraffin wax can be used in plastic capsules. This structure increases physical durability while expanding the surface area, thereby accelerating heat transfer.

#### Applications

Phase change materials are commonly integrated into building surfaces (walls, ceilings, floors) to regulate indoor temperatures. This application reduces energy consumption in heating and cooling systems and improves indoor comfort. These materials can also be used to store excess energy from renewable sources such as solar energy, which can then be used when needed. For instance, they can store energy collected by solar panels during the day for use at night. The main disadvantage of these materials is their cost. Careful design is required to ensure they operate at the correct temperature.



Section 8

# THE BUILDINGS OF THE FUTURE



## 8.1. Transition from Sustainability to Resilience in the Buildings of the Future

*Sustainability focuses on reducing environmental impacts, increasing energy efficiency, and conserving natural resources. However, contemporary threats, such as climate change and the rising frequency and intensity of natural disasters, demonstrate that buildings need to be not only sustainable but also resilient. Resilience refers to a building's ability to adapt to changing environmental, social, and economic conditions, while continuing to perform its essential functions without significant disruption.*

This transition is necessary in the design of future buildings for the following reasons:

- **Climate Change and Extreme Weather Conditions:** Increasing events such as heatwaves, floods, storms, and droughts are posing greater threats to buildings. Resilient buildings must be designed to withstand these events.
- **Energy and Resource Crises:** Continuous supply of resources such as energy and water may not always be guaranteed. Resilient buildings reduce these risks through local energy production, efficient water management, and resource use.
- **Social and Economic Impacts:** Buildings that are quickly usable after earthquakes and other disasters can accelerate the rebuilding of communities. This feature is not only part of environmental resilience but also social resilience.

### Key Features of the Buildings of the Future

- **Adaptive and Modular Design:** Buildings of the future must be able to easily adapt to user needs and environmental changes. Modular structures can integrate production methods that minimize carbon emissions from scalable production based on changing needs, starting from the construction process..
- **Energy Independence:** On-site energy production is prioritized with integrated renewable energy systems, and these systems are combined with energy storage solutions. Sensor networks and artificial intelligence solutions are used to optimize indoor climate control and maintenance processes for energy management.
- **Disaster Resilience:** Structures are designed to be resilient against environmental and social pressures, such as natural disasters and climate change, increasing the flexibility of buildings and infrastructure.
- **Net Zero Carbon Goal:** Buildings of the future aim for a low carbon footprint during construction processes and building operations. The use of recyclable materials is promoted in line with circular economy principles.
- **Water Management:** The efficient use of water resources is ensured by implementing rainwater harvesting systems and water-saving technologies.
- **Biophilic Design:** The integration of natural light, vegetation, and natural materials contributes to both user health and environmental harmony.
- **Community-Centric Approach:** The buildings of the future will create infrastructure that enhances resilience not only for individuals but also for communities. Shared spaces and features like energy sharing will support this approach.

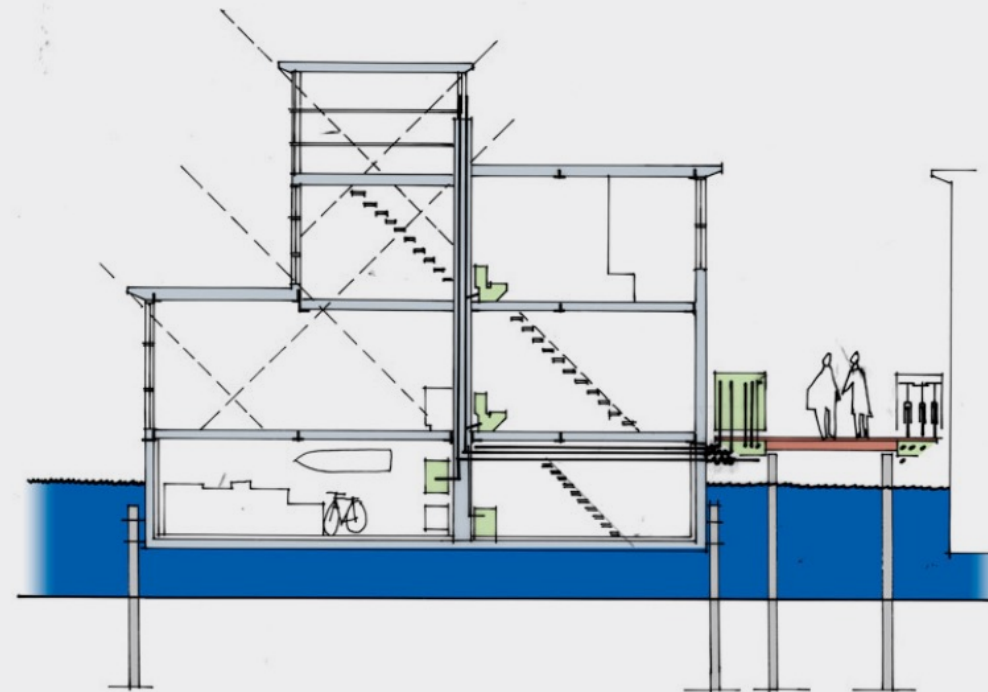
## 8.2. Floating Houses: A Resilience-Focused Vision for the Future



The Netherlands presents a striking model of the transition from sustainability to resilience through its floating house projects, developed in response to the increased risk of flooding and rising sea levels due to climate change. These homes, which easily adapt to changes in water levels, are equipped with renewable energy and eco-friendly technologies, such as solar panels, wind turbines, and rainwater harvesting systems. These systems reduce the carbon footprint by meeting energy needs through renewable sources, filter and reuse rainwater, and minimize the environmental impact of waste through low-energy purification methods. These projects aim to enhance the resilience of individuals and communities against crises, leading the way for the future lifestyle with their flexibility and self-sufficiency features. By combining the Netherlands' historical expertise in water management with advanced technology, this innovative approach presents a powerful vision for adapting to changing climate conditions, making resilience a new way of life.

### What is a Resilient Building?

A resilient building is defined as a structure that can adapt to changing environmental, social, and economic conditions while maintaining its functionality during crises and disasters. These buildings are constructed using materials and designs that are resistant to the effects of climate change, and they can be self-sufficient by utilizing energy efficiency and renewable energy sources. In addition, they promote sustainability and longevity through the efficient management of water resources, flexible interior designs, and features that strengthen community solidarity. Resilient buildings create secure, comfortable, and future-ready living spaces.



*The Architectural Section of a Typical Floating House*

# References

1. Gramazio Kohler Research. (n.d.). <https://gramaziokohler.arch.ethz.ch/web/e/forschung/273.html>
2. Meisels, M., Alami, S., Henderson, P., Hussain, A., & Hardin, K. (2019). The future of construction. In Deloitte Research Center for Energy & Industrials. <https://www2.deloitte.com/content/dam/Deloitte/us/Documents/energy-resources/us-future-of-construction-pov-2021.pdf>
3. Deutsch, R. (2018). BIM and Integrated Design: Strategies for Architectural Practice. John Wiley & Sons, Inc.
4. U.S. Department of Housing and Urban Development, Office of Policy Development and Research, & Partners, N. (2017). Innovative Building Technology Guide. <https://www.huduser.gov/portal/sites/default/files/pdf/Innovative-Building-Technology-Guide.pdf>
5. EU BIM Task Group.(2021). Avrupa Kamu Sektörü tarafından Yapı Bilgi Modellemesinin tanıtımı için El Kitabı. [https://eubim.eu/wp-content/uploads/2019/05/EU\\_BIM\\_Task\\_Group\\_Handbook\\_Turkish.pdf](https://eubim.eu/wp-content/uploads/2019/05/EU_BIM_Task_Group_Handbook_Turkish.pdf)
6. BuildingSMART Türkiye, Çıtıptıoğlu, A., (Editör) (2021). İnşaat Sektöründe Bilgi Yönetimi Süreci.
7. Başyazıcı,U. (2010) Building Information Modeling Based HVAC Design - Current Situation and Future Perspectives, Clima 2010: 10th REHVA world congress “Sustainable Energy Use in Buildings”; 9 - 12 May, Antalya
8. Digital Twin Consortium (2024), What is the Value of Digital Twins? <https://www.digitaltwinconsortium.org/what-is-the-value-of-digital-twins/>
9. Arup. (2018). The Hague City Hall digital twin. <https://www.arup.com/projects/the-hague-city-hall-digital-twin/>
10. Arup (2019). Digital twin: Towards a meaningful framework. <https://www.arup.com/globalassets/downloads/insights/digital-twin-towards-a-meaningful-framework.pdf>
11. Dubai Municipality. (2024) 3DCP Guideline – 1st Edition – June 2024. <https://www.dm.gov.ae/wp-content/uploads/2024/07/Dubai-Municipality-3DCP-Guideline-1st-Edition-Jun24.pdf>
12. The Boston Consulting Group, World Economic Forum, Bühler, M. M., & Kosta, I. (2017). Shaping the Future of Construction. [https://www3.weforum.org/docs/WEF\\_Shaping\\_the\\_Future\\_of\\_Construction\\_Inspiring\\_Innovators\\_redefine\\_the\\_industry\\_2017.pdf](https://www3.weforum.org/docs/WEF_Shaping_the_Future_of_Construction_Inspiring_Innovators_redefine_the_industry_2017.pdf)
13. Design for Manufacturing and Assembly: A new approach for construction projects.(2021) Autodesk Customer Success Story Bryden Wood [Press-release]. <https://damassets.autodesk.net/content/dam/autodesk/www/products/autodesk-revit-family/fy22/construction-industry/assets/bryden-wood-customer-story-dfma-en.pdf>
14. De Groote, M., Volt, J., Bean, F., (2017) Is Europe ready for the smart buildings revolution? Buildings Performance Institute Europe (BPIE). [https://bpie.eu/wp-content/uploads/2017/02/STATUS-REPORT-Is-Europe-ready\\_FINAL\\_LR.pdf](https://bpie.eu/wp-content/uploads/2017/02/STATUS-REPORT-Is-Europe-ready_FINAL_LR.pdf)
15. British Council for Offices, Fordham, M., Cash, D., & Wojtowicz, N. (2018). Fast and Slow Buildings. [https://research.bco.org.uk/resources/clients/3/user/resource\\_920.pdf](https://research.bco.org.uk/resources/clients/3/user/resource_920.pdf)

# References

16. L. Hernández, J. L., De Miguel, I., Vélez, F.,(2024). Challenges and opportunities in European smart buildings energy management: A critical review. *Renewable and Sustainable Energy Reviews* (Vol. 199, p. 114472). <https://doi.org/10.1016/j.rser.2024.114472>
17. Jalia, A., Bakker,R.,Ramage M., The Edge, Amsterdam: Showcasing an exemplary IoT building. In *The Edge*, [https://www.cdbb.cam.ac.uk/system/files/documents/TheEdge\\_Paper\\_LOW1.pdf](https://www.cdbb.cam.ac.uk/system/files/documents/TheEdge_Paper_LOW1.pdf)
18. A.V. Lițiu, O.Seppänen, S.Pantelis, J.Hogeling., (2021), The smart readiness indicator for buildings: current status and next steps. *REHVA Journal* . <https://www.rehva.eu/rehva-journal/chapter/the-smart-readiness-indicator-for-buildings-current-status-and-next-steps>
19. Paccou, R., Roussilhe, G., Schneider Electric Sustainability Research Institute, & Bieser, J. (2024). AI-Powered HVAC in Educational Buildings: A Net Digital Impact Use Case. In *The Digitalization of Energy Series [Journal-article]*. [https://download.schneider-electric.com/files?p\\_enDocType=Thought+Leadership+Article&p\\_Doc\\_Ref=TLA\\_AI\\_Powered\\_HVAC](https://download.schneider-electric.com/files?p_enDocType=Thought+Leadership+Article&p_Doc_Ref=TLA_AI_Powered_HVAC)
20. Jones, R. (2024). Low energy use confirmed at Foleshill Health Centre. *Community Health Partnerships*. <https://communityhealthpartnerships.co.uk/news/low-energy-use-confirmed-at-foleshill-health-centre/>
21. Lyong. (2017). Desk research – Arup’s desk of the future. *CIBSE Journal*. <https://www.cibsejournal.com/general/desk-research-arups-desk-of-the-future/>
22. Aryal, A., Becerik-Gerber, B., Anselmo, F., Roll, S. C., & Lucas, G. M. (2019). Smart desks to promote comfort, health, and productivity in offices: A vision for future workplaces. *Frontiers in Built Environment*, 5, 76. <https://doi.org/10.3389/fbuil.2019.00076>
23. IEA (2023), *Efficient Grid-Interactive Buildings*, IEA, Paris <https://www.iea.org/reports/efficient-grid-interactive-buildings>
24. Roberts, S., Guariento, N. (2009). *Building Integrated Photovoltaics: A Handbook*. Walter de Gruyter GmbH.
25. What is a SolarLeaf Bioreactive Façade? (2021). *theconstructor.org*. <https://theconstructor.org/building/smart-materials/solarleaf-bioreactive-facade/45375/>
26. Arup. (2013). *SolarLeaf*. <https://www.arup.com/projects/solarleaf/>
27. The world’s first bio-reactive façade system for low-carbon buildings. (2014). In Hamburg, Germany, *Smart Cities – Good Practice* (pp. 1–3). [https://pocacito.eu/sites/default/files/BIQhouse\\_Hamburg.pdf](https://pocacito.eu/sites/default/files/BIQhouse_Hamburg.pdf)
28. H. Davies & K. Butcher (Eds.) (2021). *Electrification of buildings for net zero*. CIBSE
29. Seaman, A., Martin, A., Sands, J.. (2000). *HVAC Thermal Storage: Practical application and performance issues*. BSRIA
30. Piggott, J. (2018). *Energy Storage in Buildings: A Technology Overview*. BSRIA

# References

31. Frattolillo, A., Canale, L., Ficco, G., Mastino, C. C., & Dell'Isola, M. (2020). Potential for Building Façade-Integrated Solar Thermal Collectors in a Highly Urbanized Context. *Energies*, 13(21), 5801. <https://doi.org/10.3390/en13215801>
32. Dodd, N., King, M., Shaw, R. (2008). Urban Planning for a Low Carbon Future. [http://urbed.coop/sites/default/files/Community%20Energy%20Guide\\_0.pdf](http://urbed.coop/sites/default/files/Community%20Energy%20Guide_0.pdf)
33. Embracing a wetter future, the Dutch turn to floating homes. (2021). Yale E360. <https://e360.yale.edu/features/the-dutch-flock-to-floating-homes-embracing-a-wetter-future>
34. Thorne, A. (2006). Renewable Energy Sources for Buildings. CIBSE
35. Innovation in Construction: A Practical Guide to Transforming the Construction Industry. (2022). Springer International Publishing.
36. IEA (2023), Efficient Grid-Interactive Buildings, IEA, Paris <https://www.iea.org/reports/efficient-grid-interactive-buildings>
37. IEA (2021). Solar District Heating: Solar Energy in Urban Heating Networks (Task 55). Retrieved from <https://task55.iea-shc.org/Data/Sites/1/publications/Solar-District-Heating-TR.PDF>
38. Centre for Digital Built Britain. (2021). Bridging the Gap Between Construction and Manufacturing: Platforms. [https://www.cdbb.cam.ac.uk/files/platforms\\_bridging\\_the\\_gap\\_small.pdf](https://www.cdbb.cam.ac.uk/files/platforms_bridging_the_gap_small.pdf)



Co-funded by the  
European Union



# CONGRATULATIONS!

*You have successfully completed  
Module 6. Now, reinforce your learning by  
taking the test and challenging yourself!*

This module was co-funded by the European Union. Its contents are the sole responsibility of WRI Türkiye and do not necessarily reflect the views of the European Union.

